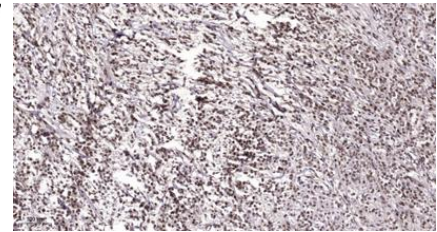
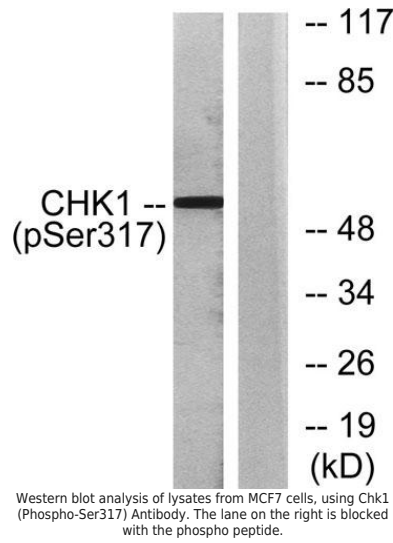
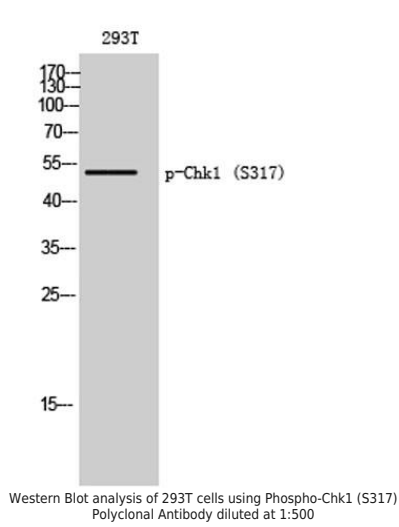

Product name:	Phospho-Chk1 (Ser317) Rabbit Polyclonal Antibody
Cat number:	ABP-0018
Conjugate:	Unconjugated
Size:	100 ug
Clone:	POLY
Concentration:	1mg/ml
Host:	Rabbit
Isotype:	IgG
Immunogen:	The antiserum was produced against synthesized peptide derived from human Chk1 around the phosphorylation site of Ser317. AA range:286-335
Reactivity:	Human,Mouse
Applications:	Western Blot: 1/500 - 1/2000. Immunohistochemistry: 1/100 - 1/300 Immunofluorescence: 1/50-1/200 ELISA: 1/5000.
Molecular Weight:	54kD
Purification:	Aff. Pur.
Form:	Liquid
Buffer:	Liquid in PBS containing 50% glycerol, 0.5% BSA and 0.02% sodium azide.
Storage:	Store at -20°C. Avoid repeated freeze-thaw cycles.
Background:	The protein encoded by this gene belongs to the Ser/Thr protein kinase family. It is required for checkpoint mediated cell cycle arrest in response to DNA damage or the presence of unreplicated DNA. This protein acts to integrate signals from ATM and ATR, two cell cycle proteins involved in DNA damage responses, that also associate with chromatin in meiotic prophase I. Phosphorylation of CDC25A protein phosphatase by this protein is required for cells to delay cell cycle progression in response to double-strand DNA breaks. Several alternatively spliced transcript variants have been found for this gene.



Immunohistochemical analysis of paraffin-embedded human Colon cancer. 1, Antibody was diluted at 1:200(4° overnight).2, Tris-EDTA,pH9.0 was used for antigen retrieval. 3,Secondary antibody was diluted at 1:200(room temperature, 45min).