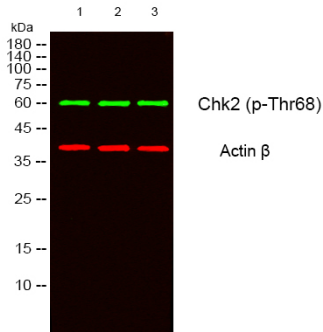
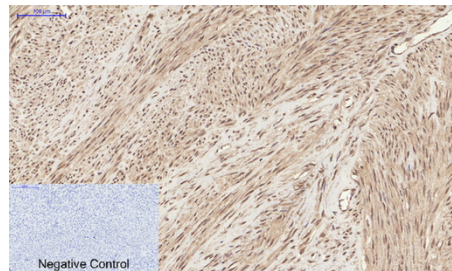


---

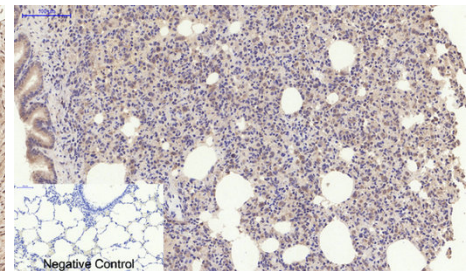
<b>Product name:</b>	Phospho-Chk2 (Thr68) Rabbit Polyclonal Antibody
<b>Cat number:</b>	ABP-0590
<b>Conjugate:</b>	Unconjugated
<b>Size:</b>	100 ug
<b>Clone:</b>	POLY
<b>Concentration:</b>	1mg/ml
<b>Host:</b>	Rabbit
<b>Isotype:</b>	IgG
<b>Immunogen:</b>	The antiserum was produced against synthesized peptide derived from human Chk2 around the phosphorylation site of Thr68. AA range:35-84
<b>Reactivity:</b>	Human,Mouse, Rat
<b>Applications:</b>	Western Blot: 1/500 - 1/2000. Immunohistochemistry: 1/100 - 1/300 Immunofluorescence: 1/50-1/200 ELISA: 1/5000.
<b>Molecular Weight:</b>	61 kDa
<b>Purification:</b>	The antibody was affinity-purified from rabbit antiserum by affinity-chromatography using epitope-specific immunogen.
<b>Form:</b>	Liquid
<b>Buffer:</b>	Liquid in PBS containing 50% glycerol, 0.5% BSA and 0.02% sodium azide.
<b>Storage:</b>	Store at -20°C. Avoid repeated freeze-thaw cycles.
<b>Background:</b>	In response to DNA damage and replication blocks, cell cycle progression is halted through the control of critical cell cycle regulators. The protein encoded by this gene is a cell cycle checkpoint regulator and putative tumor suppressor. It contains a forkhead-associated protein interaction domain essential for activation in response to DNA damage and is rapidly phosphorylated in response to replication blocks and DNA damage. When activated, the encoded protein is known to inhibit CDC25C phosphatase, preventing entry into mitosis, and has been shown to stabilize the tumor suppressor protein p53, leading to cell cycle arrest in G1. In addition, this protein interacts with and phosphorylates BRCA1, allowing BRCA1 to restore survival after DNA damage. Mutations in this gene have been linked with Li-Fraumeni syndrome, a highly penetrant familial cancer phenotype usually associated with inherited mutati.



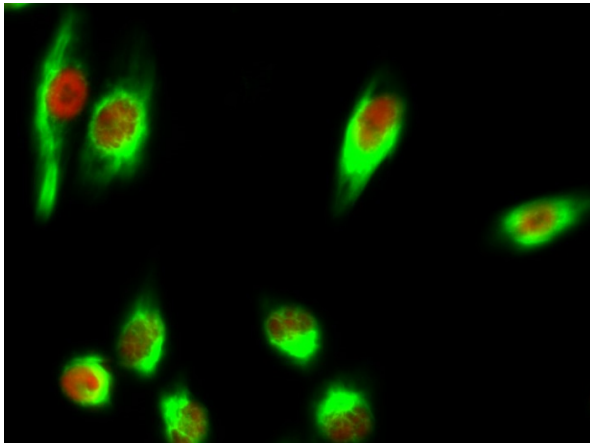
Western blot analysis of lysates from 1) 293T, 2) HELA cells. (Green) primary antibody was diluted at 1:1000, 4° over night, secondary antibody (cat:RS23920) was diluted at 1:10000, 37° 1hour. (Red) Actin β Monoclonal Antibody(5B7) (cat:YM3028) antibody was diluted at 1:5000 as loading control, 4° over night, secondary antibody (cat:RS23710) was diluted at 1:10000, 37° 1hour.



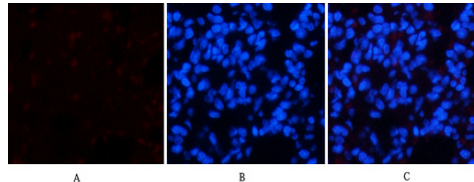
Immunohistochemical analysis of paraffin-embedded Human-uterus tissue. 1.Chk2 (phospho Thr68) Polyclonal Antibody was diluted at 1:200(4°C,overnight). 2. Sodium citrate pH 6.0 was used for antibody retrieval(>98°C,20min). 3.Secondary antibody was diluted at 1:200(room temperature, 30min). Negative control was used by secondary antibody only.



Immunohistochemical analysis of paraffin-embedded Rat-lung tissue. 1.Chk2 (phospho Thr68) Polyclonal Antibody was diluted at 1:200(4°C,overnight). 2. Sodium citrate pH 6.0 was used for antibody retrieval(>98°C,20min). 3.Secondary antibody was diluted at 1:200(room temperature, 30min). Negative control was used by secondary antibody only.



Immunofluorescence analysis of HeLa cell. 1.Chk2 (phospho Thr68) Polyclonal Antibody(red) was diluted at 1:200(4° overnight). HA01 Monoclonal Antibody(Mix)(green) was diluted at 1:200(4° overnight). 2. Goat Anti Rabbit Alexa Fluor 594 Catalog:RS3611 was diluted at 1:1000(room temperature, 50min). Goat Anti Mouse Alexa Fluor 488 was diluted at 1:1000(room temperature, 50min).



Immunofluorescence analysis of rat-lung tissue. 1.Chk2 (phospho Thr68) Polyclonal Antibody(red) was diluted at 1:200(4°C,overnight). 2. Cy3 labeled Secondary antibody was diluted at 1:300(room temperature, 50min). 3. Picture B: DAPI(blue) 10min. Picture A:Target. Picture B: DAPI. Picture C: merge of A+B