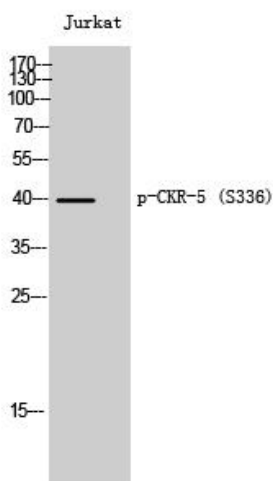


Product name:	Phospho-CKR-5 (S336)
Cat number:	ABP11210
Conjugate:	Unconjugated
Size:	100 ug
Clone:	Poly
Concentration:	1mg/ml
Host:	Rb
Isotype:	IgG
Immunogen:	Synthesized peptide derived from human CKR-5 around the phosphorylation site of S336.
Reactivity:	Hu, Ms, Rt
Applications:	Western Blot: 1:500-1:2000 ELISA: 1:10000
Molecular Weight:	40 kDa
Purification:	The antibody was affinity-purified from rabbit antiserum by affinity-chromatography using epitope-specific immunogen.
Form:	liquid
Buffer:	PBS with 0.02% sodium azide, 50% glycerol, pH7.3.
Storage:	Store at -20°C for one year. For short term storage and frequent use, store at 4°C for up to one month. Avoid repeated freeze-thaw cycles.



Western blotting validation for Anti-Phospho-CKR-5 (S336) CCR5 Antibody Western Blot (WB) analysis of Jurkat cells using Phospho-CKR-5 (S336) polyclonal antibody. Electrophoresis was performed on a SDS-PAGE gel. To determine SDS-PAGE gel concentration