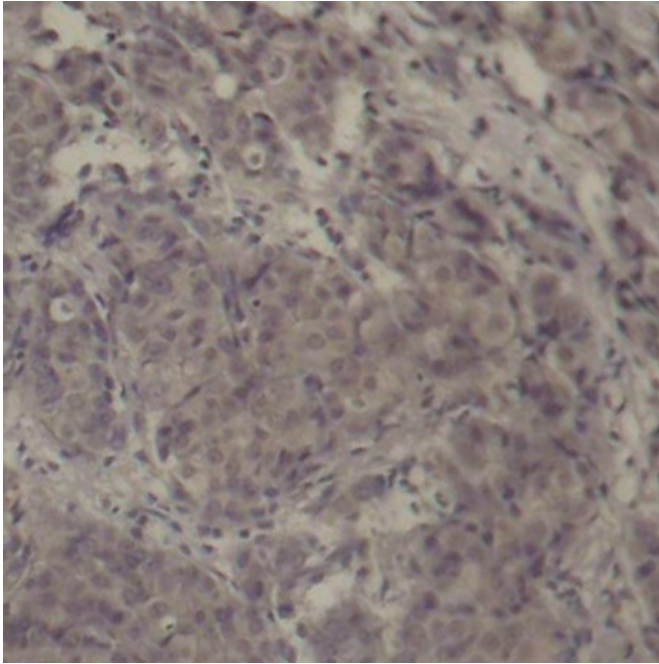


<b>Product name:</b>	Phospho-CREB1-S142
<b>Cat number:</b>	ABP-0334
<b>Conjugate:</b>	Unconjugated
<b>Size:</b>	100 ug
<b>Clone:</b>	Poly
<b>Concentration:</b>	1mg/ml
<b>Host:</b>	Rb
<b>Isotype:</b>	IgG
<b>Immunogen:</b>	A phospho specific peptide corresponding to residues surrounding Ser142 of human CREB1.
<b>Reactivity:</b>	Hu, Ms, Rt
<b>Applications:</b>	IHC 1:50 - 1:100
<b>Molecular Weight:</b>	43kDa
<b>Purification:</b>	Affinity Purification
<b>Form:</b>	liquid
<b>Buffer:</b>	PBS with 0.02% sodium azide, 50% glycerol, pH7.3.
<b>Storage:</b>	Store at -20°C. Avoid freeze / thaw cycles.
<b>Background:</b>	This gene encodes a transcription factor that is a member of the leucine zipper family of DNA binding proteins. This protein binds as a homodimer to the cAMP responsive element, an octameric palindrome. The protein is phosphorylated by several protein kinases, and induces transcription of genes in response to hormonal stimulation of the cAMP pathway. Alternate splicing of this gene results in two transcript variants encoding different isoforms.



Immunohistochemical analysis of paraffin-embedded human breast carcinoma tissue using Phospho-CREB1-S142 antibody.