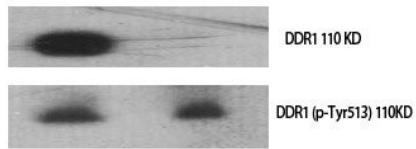

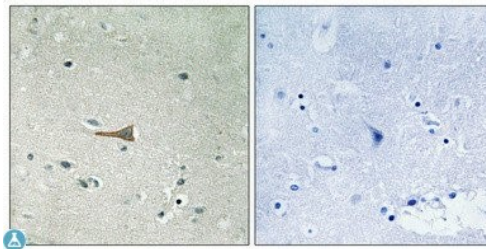


Product name:	Phospho-DDR1 (Y513)
Cat number:	ABP10321
Conjugate:	Unconjugated
Size:	100 ug
Clone:	Poly
Concentration:	1mg/ml
Host:	Rb
Isotype:	IgG
Immunogen:	Synthesized peptide derived from human DDR1 around the phosphorylation site of Y513.
Reactivity:	Hu, Ms, Rt
Applications:	Western Blot: 1:500-1:2000 Immunohistochemistry: 1:100-1:300 ELISA: 1:10000
Molecular Weight:	110 kDa
Purification:	The antibody was affinity-purified from rabbit antiserum by affinitychromatography using epitope-specific immunogen.
Form:	liquid
Buffer:	Liquid in PBS containing 50% glycerol, 0.5% BSA and 0.02% sodium azide.
Storage:	Store at -20°C, and avoid repeat freeze-thaw cycles
Background:	Tyrosine kinase that functions as cell surface receptor for fibrillar collagen and regulates cell attachment to the extracellular matrix, remodeling of the extracellular matrix, cell migration, differentiation, survival and cell proliferation. Collagen binding triggers a signaling pathway that involves SRC and leads to the activation of MAP kinases. Regulates remodeling of the extracellular matrix by up-regulation of the matrix metalloproteinases MMP2, MMP7 and MMP9, and thereby facilitates cell migration and wound healing. Required for normal blastocyst implantation during pregnancy, for normal mammary gland differentiation and normal lactation. Required for normal ear morphology and normal hearing. Promotes smooth muscle cell migration, and thereby contributes to arterial wound healing. Also plays a role in tumor cell invasion. Phosphorylates PTPN11. Phospho-DDR1 (Y513) polyclonal antibody detects endogenous levels of DDR1 protein only when phosphorylated at Y513.



-	+	-	phospho-peptide
-	-	+	non-phospho-peptide
+	+	+	HepG2 cell, Na3VO4 0.3mM 40'

 Western Blot (WB) analysis of specific cells using Phospho-DDR1 (Y513) polyclonal antibody.



 Immunohistochemical analysis of paraffin-embedded Human brain. Antibody was diluted at 1:100 (4°C, overnight). High-pressure and temperature Tris-EDTA, pH8.0 was used for antibody retrieval. Negative control (right) obtained from antibody was pre-absorbed by immunogen peptide.