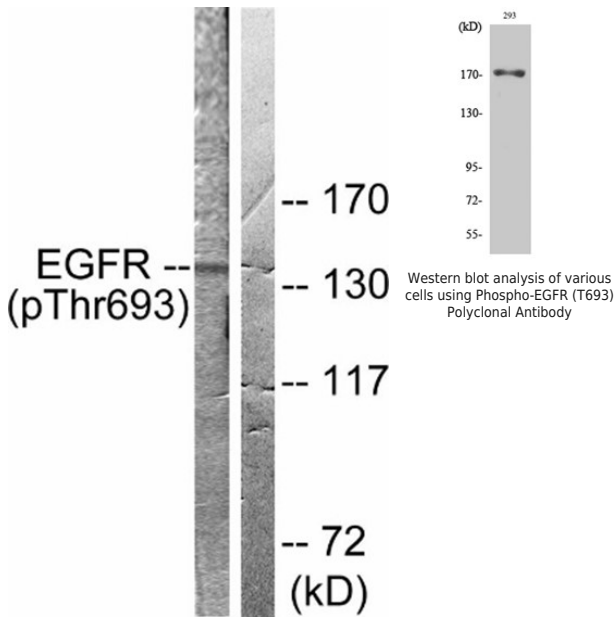
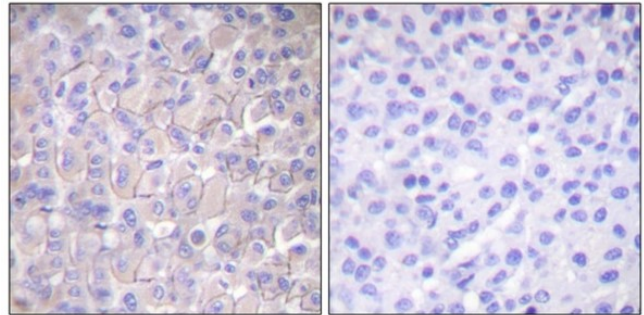
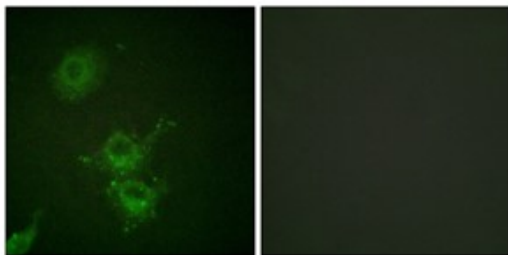

Product name:	Phospho-EGFR (T693)
Cat number:	ABP-0199
Conjugate:	Unconjugated
Size:	100 ug
Clone:	Poly
Concentration:	1mg/ml
Host:	Rb
Isotype:	IgG
Immunogen:	Synthesized peptide derived from human EGFR around the phosphorylation site of T693.
Reactivity:	Hu, Ms, Rt
Applications:	Western Blot: 1:500-1:2000 Immunohistochemistry: 1:100-1:300 Immunofluorescence: 1:200-1:1000 ELISA: 1:40000
Purification:	The antibody was affinity-purified from rabbit antiserum by affinity-chromatography using a epitope-specific immunogen.
Form:	liquid
Buffer:	Liquid in PBS containing 50% glycerol, 0.5% BSA and 0.02% sodium azide.
Storage:	Store at -20°C, and avoid repeat freeze-thaw cycles.
Background:	Phospho-EGFR (T693) polyclonal antibody detects endogenous levels of EGFR protein only when phosphorylated at T693.



Western blot analysis of lysates from A431 cells, using EGFR (Phospho-Thr693) Antibody. The lane on the right is blocked with the phospho peptide.



Immunohistochemistry analysis of paraffin-embedded human breast carcinoma, using EGFR (Phospho-Thr693) Antibody. The picture on the right is blocked with the phospho peptide.



Immunofluorescence analysis of HUVEC cells, using EGFR (Phospho-Thr693) Antibody. The lane on the right is blocked with the phospho peptide.