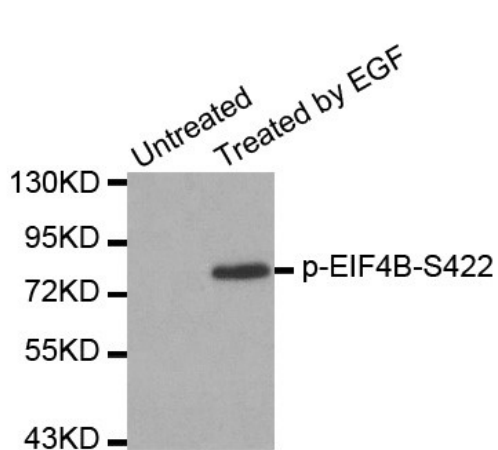
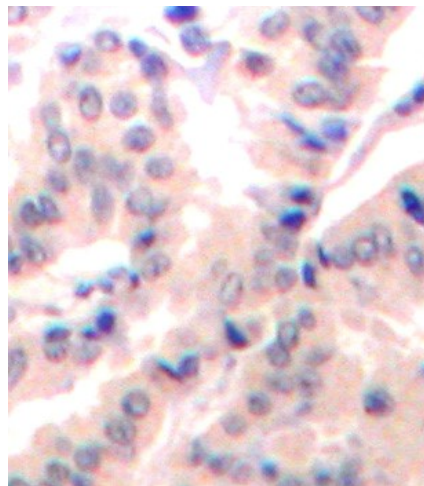


<b>Product name:</b>	Phospho-eIF4B1 (S422)
<b>Cat number:</b>	ABP-0278
<b>Conjugate:</b>	Unconjugated
<b>Size:</b>	100 ug
<b>Clone:</b>	Poly
<b>Concentration:</b>	1mg/ml
<b>Host:</b>	Rb
<b>Isotype:</b>	IgG
<b>Immunogen:</b>	A phospho specific peptide corresponding to residues surrounding S422 of human EIF4B.
<b>Reactivity:</b>	Hu, Ms
<b>Applications:</b>	Western Blot: 1:1000 Immunohistochemistry (paraffin-embedded tissues): 1:50-1:
<b>Molecular Weight:</b>	80kDa
<b>Purification:</b>	Affinity purification
<b>Form:</b>	liquid
<b>Buffer:</b>	PBS with 0.02% sodium azide, 50% glycerol, pH7.3
<b>Storage:</b>	Store at -20°C. Avoid freeze / thaw cycles.



Western blot analysis of extracts from HeLa cells using phospho-EIF4B-S422 antibody.



Immunohistochemical analysis of paraffin-embedded human lung carcinoma tissue using phospho-EIF4B-S422 antibody.