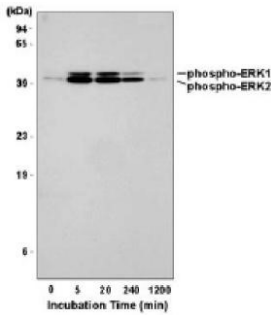
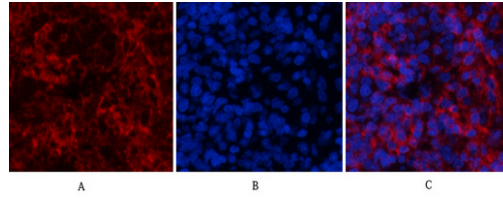
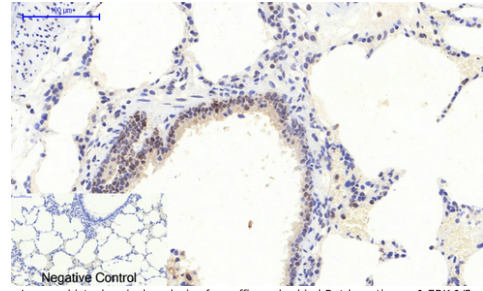

Product name:	Phospho-ERK1/ERK2 (p44/p42 MAPK) (T202/Y204)
Cat number:	ABP-83922
Conjugate:	Unconjugated
Size:	100 ug
Clone:	Poly
Concentration:	1mg/ml
Host:	Rabbit
Isotype:	IgG
Immunogen:	Peptide derived from the protein area including conserved pT-E-pY motif of activated Erk 1,2
Reactivity:	Hu, Ms, Rt
Applications:	Western blotting:1:1000 Immunohistochemistry:1:100-500 Immunofluorescence: 1:100-500 Immunocytochemistry: 1:100
Molecular Weight:	42,44kDa
Form:	liquid
Buffer:	20 mM Tris Hcl, pH 8 10 mg/mL BSA - 0,05% Sodium Azide
Storage:	The antibody can be stored at 2° - 8° C for 1 month without detectable loss of activity. Antibody can also be aliquotted and stored frozen at -20° C to -70° C in a manual defrost freezer for six months without detectable loss of activity. Avoid repeated freeze-thaw cycles.
Background:	The protein encoded by this gene is a member of the MAP kinase family. MAP kinases, also known as extracellular signal-regulated kinases (ERKs), act in a signaling cascade that regulates various cellular processes such as proliferation, differentiation, and cell cycle progression in response to a variety of extracellular signals. This kinase is activated by upstream kinases, resulting in its translocation to the nucleus where it phosphorylates nuclear targets. Alternatively spliced transcript variants encoding different protein isoforms have been described.



Detection of ERK1 and ERK2 phosphorylated at T202/Y204 and T185/Y187, respectively. Human HeLa cells were incubated with 200 nM PMA for the indicated times. Total cell lysates in gel sample buffer were resolved by SDS-PAGE.



Immunofluorescence analysis of rat-lung tissue. 1. ERK 1/2 (phospho Thr202/Y204) Polyclonal Antibody (red) was diluted at 1:200 (4°C, overnight). 2. Cy3 labeled Secondary antibody was diluted at 1:300 (room temperature, 50 min). 3. Picture B: DAPI (blue) 10 min. Picture A: Target. Picture B: DAPI. Picture C: merge of A+B



Negative Control

Immunohistochemical analysis of paraffin-embedded Rat-lung tissue. 1. ERK 1/2 (phospho Thr202/Y204) Polyclonal Antibody was diluted at 1:200 (4°C, overnight). 2. Sodium citrate pH 6.0 was used for antibody retrieval (>98°C, 20 min). 3. Secondary antibody was diluted at 1:200 (room temperature, 30 min). Negative control was used by secondary antibody only.