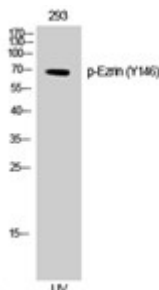


|                          |   |
|--------------------------|---|
| <b>Product name:</b>     | Phospho-Ezrin (Y146)  |
| <b>Cat number:</b>       | ABP-10002   |
| <b>Conjugate:</b>        | Unconjugated  |
| <b>Size:</b>             | 100 ug  |
| <b>Clone:</b>            | Poly  |
| <b>Concentration:</b>    | 1mg/ml  |
| <b>Host:</b>             | Rb  |
| <b>Isotype:</b>          | IgG   |
| <b>Immunogen:</b>        | Synthesized peptide derived from human Ezrin around the phosphorylation site of Y146.   |
| <b>Reactivity:</b>       | Hu, Ms, Rt  |
| <b>Applications:</b>     | Western Blot 1:1,000 ELISA: 1:20,000  |
| <b>Molecular Weight:</b> | 69 kDa  |
| <b>Purification:</b>     | The antibody was affinity-purified from rabbit antiserum by affinity-chromatography using epitope-specific immunogen.   |
| <b>Form:</b>             | liquid  |
| <b>Buffer:</b>           | Liquid in PBS containing 50% glycerol, 0.5% BSA and 0.02% sodium azide.   |
| <b>Storage:</b>          | Store at -20°C, and avoid repeat freeze-thaw cycles.  |
| <b>Background:</b>       | Probably involved in connections of major cytoskeletal structures to the plasma membrane. In epithelial cells, required for the formation of microvilli and membrane ruffles on the apical pole. Along with PLEKHG6, required for normal macropinocytosis.: Phospho-Ezrin (Y146) Polyclonal Antibody detects endogenous levels of Ezrin protein only when phosphorylated at Y146. |



Western Blot (WB) analysis of 293 cells using Phospho-Ezrin (Y146) Polyclonal Antibody.