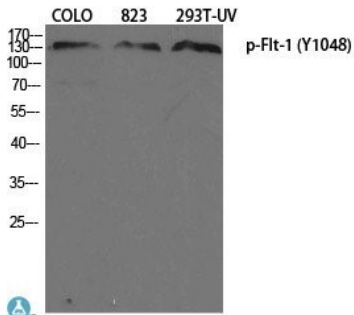
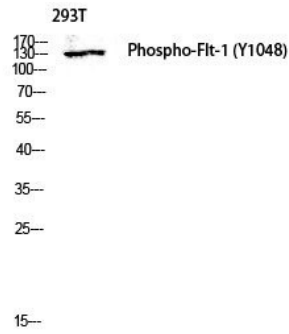
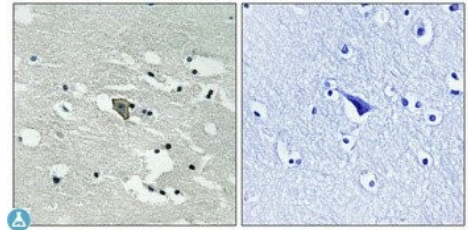

Product name:	Phospho-Flt-1 (Y1048)
Cat number:	ABP10438
Conjugate:	Unconjugated
Size:	100 ug
Clone:	Poly
Concentration:	1mg/ml
Host:	Rb
Isotype:	IgG
Immunogen:	Synthesized peptide derived from human Flt-1 around the phosphorylation site of Y1048.
Reactivity:	Hu, Ms, Rt
Applications:	Immunohistochemistry: 1:100-1:300 ELISA: 1:5000
Molecular Weight:	180 kDa
Purification:	The antibody was affinity-purified from rabbit antiserum by affinity chromatography using epitope-specific immunogen.
Form:	liquid
Buffer:	Liquid in PBS containing 50% glycerol, 0.5% BSA and 0.02% sodium azide.
Storage:	Store at -20°C, and avoid repeat freeze-thaw cycles
Background:	Phospho-Flt-1 (Y1048) Polyclonal Antibody detects endogenous levels of Flt-1 protein only when phosphorylated at Y1048. Tissue Specificity: Detected in normal lung, but also in placenta, liver, kidney, heart and brain tissues. Specifically expressed in most of the vascular endothelial cells, and also expressed in peripheral blood monocytes. Isoform 2 is strongly expressed in placenta. Isoform 3 is expressed in corneal epithelial cells (at protein level). Isoform 3 is expressed in vascular smooth muscle cells (VSMC).



Western Blot (WB) analysis of COLO, 823 and 293T-UV cells, using Anti-Phospho-Flt-1 (Y1048) polyclonal antibody.



Western Blot (WB) analysis of 293T lysis using Anti-Phospho-Flt-1 (Y1048) antibody.



Immunohistochemical analysis of paraffin-embedded Human brain using Anti-Phospho-Flt-1 (Y1048) polyclonal antibody. Antibody was diluted at 1:100 (4°C, overnight). High-pressure and temperature Tris-EDTA, pH8.0 was used for antibody retrieval. Negative control (right) obtained from antibody was pre-absorbed by immunogen peptide.