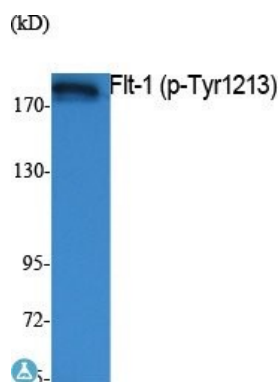


<b>Product name:</b>	Phospho-Flt-1 (Y1213)
<b>Cat number:</b>	ABP10439
<b>Conjugate:</b>	Unconjugated
<b>Size:</b>	100 ug
<b>Clone:</b>	Poly
<b>Concentration:</b>	1mg/ml
<b>Host:</b>	Rb
<b>Isotype:</b>	IgG
<b>Immunogen:</b>	Synthesized peptide derived from human Flt-1 around the phosphorylation site of Y1213.
<b>Reactivity:</b>	Hu, Ms, Rt
<b>Applications:</b>	Western Blot: 1:500-1:2000 ELISA: 1:40000
<b>Molecular Weight:</b>	180 kDa
<b>Purification:</b>	he antibody was affinity-purified from rabbit antiserum by affinitychromatography using epitope-specific immunogen.
<b>Form:</b>	liquid
<b>Buffer:</b>	Liquid in PBS containing 50% glycerol, 0.5% BSA and 0.02% sodium azide.
<b>Storage:</b>	Store at -20°C, and avoid repeat freeze-thaw cycles
<b>Background:</b>	Phospho-Flt-1 (Y1213) Polyclonal Antibody detects endogenous levels of Flt-1 protein only when phosphorylated at Y1213. Tissue Specificity: Detected in normal lung, but also in placenta, liver, kidney, heart and brain tissues. Specifically expressed in most of the vascular endothelial cells, and also expressed in peripheral blood monocytes. Isoform 2 is strongly expressed in placenta. Isoform 3 is expressed in corneal epithelial cells (at protein level). Isoform 3 is expressed in vascular smooth muscle cells (VSMC).



Western Blot (WB) analysis of extracts from K562 cells, using Phospho-Flt-1 (Y1213) polyclonal antibody.