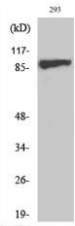
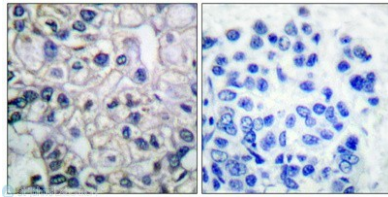
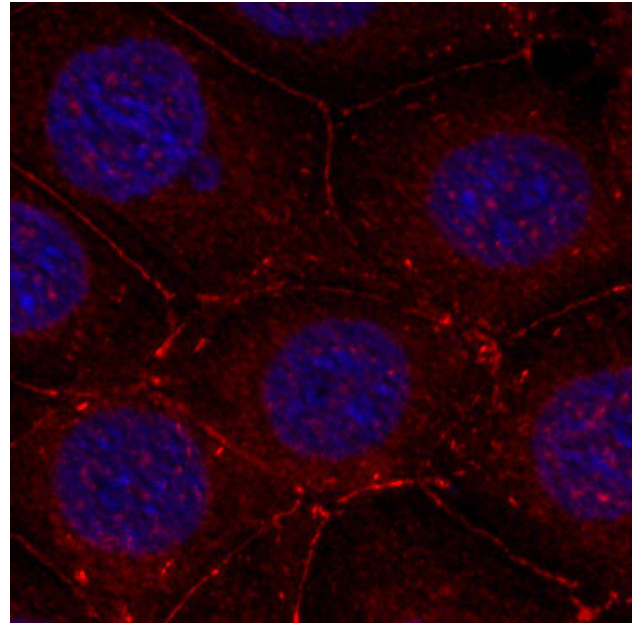

Product name:	Phospho-IGF-1R (Y1161)
Cat number:	ABP-0367
Conjugate:	Unconjugated
Size:	100 ug
Clone:	Poly
Concentration:	1mg/ml
Host:	Rb
Isotype:	IgG
Immunogen:	Synthesized peptide derived from human IGF-1R around the phosphorylation site of Y1161. Immunogen Region: 1100-1180 aa
Reactivity:	Hu, Ms, Rt
Applications:	Western Blot: 1:1000 Immunohistochemistry: 1:100-1:300 Immunofluorescence: 1:200-1:1000 ELISA: 1:40000
Molecular Weight:	95 kDa
Purification:	The antibody was affinity-purified from rabbit antiserum by affinitychromatography using epitope-specific immunogen.
Form:	liquid
Buffer:	Liquid in PBS containing 50% glycerol, 0.5% BSA and 0.02% sodium azide.
Storage:	Store at -20°C, and avoid repeat freeze-thaw cycles.
Background:	Found as a hybrid receptor with INSR in muscle, heart, kidney, adipose tissue, skeletal muscle, hepatoma, fibroblasts, spleen and placenta (at protein level). Expressed in a variety of tissues. Overexpressed in tumors, including melanomas, cancers of the colon, pancreas prostate and kidney. Specificity: Phospho-IGF-1R (Y1161) Polyclonal Antibody detects endogenous levels of IGF-1R protein only when phosphorylated at Y1161.



Western Blot (WB) analysis of specific cells using Phospho-IGF-1R (Y1161) Polyclonal Antibody.



Immunohistochemical analysis of paraffin-embedded Human breast cancer. Antibody was diluted at 1:100(4^o, overnight). High-pressure and temperature Tris-EDTA, pH8.0 was used for antibody retrieval. Negative control (right) obtained from antibody was pre-absorbed.



Immunofluorescence staining - Phospho-IGF1R-Y1161 antibody