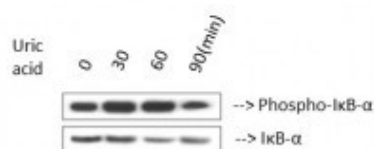


<b>Product name:</b>	Phospho-IKKB-alpha S32/36
<b>Cat number:</b>	ABP-9031
<b>Conjugate:</b>	Unconjugated
<b>Size:</b>	100 ul
<b>Clone:</b>	Poly
<b>Concentration:</b>	1mg/ml
<b>Host:</b>	Rb
<b>Isotype:</b>	IgG
<b>Immunogen:</b>	Synthesized peptide derived from human IκB-α around the phosphorylation site of S32/S36.
<b>Reactivity:</b>	Hu, Ms, Rt, Mk
<b>Applications:</b>	Western Blot: 1:1000 Immunohistochemistry: 1:100-1:300 Immunofluorescence: 1:200-1:1000 Elisa: 1:10000
<b>Molecular Weight:</b>	36 kDa
<b>Purification:</b>	The antibody was affinity-purified from rabbit antiserum by affinity-chromatography using epitope-specific immunogen.
<b>Form:</b>	liquid
<b>Buffer:</b>	Liquid in PBS containing 50% glycerol, 0.5% BSA and 0.02% sodium azide.
<b>Storage:</b>	Store at -20°C, and avoid repeat freeze-thaw cycles.
<b>Background:</b>	Anti-Phospho-IκB-α (S32/S36) Polyclonal Antibody detects endogenous levels of IκB-α protein only when phosphorylated at S32/S36



Western Blot (WB) analysis of Uric acid treated COS7 cells using IκappaB-alpha (phospho Ser32/S36) Polyclonal Antibody. (STJ90311)