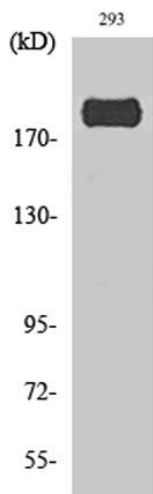
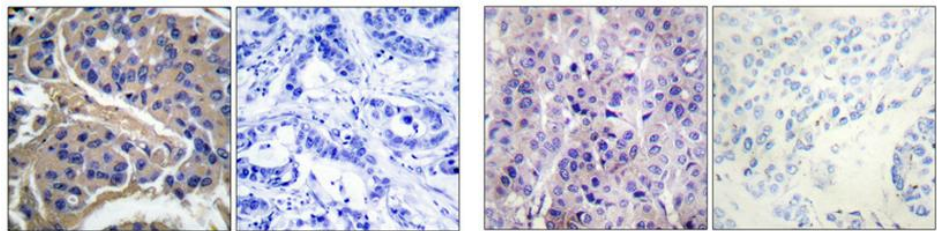


Product name:	Phospho-Insulin Receptor Substrate 1 (S307)
Cat number:	ABP-0431
Conjugate:	Unconjugated
Size:	100 ug
Clone:	Poly
Concentration:	1mg/ml
Host:	Rb
Isotype:	IgG
Immunogen:	Synthesized Phospho Peptide around the Phosphorylation site of human IRS_1(phospho Ser307)
Reactivity:	Hu, Ms, Rt,Mk
Applications:	WB: 1:500 - 1:1000, IHC-p 1:100- 1:200
Molecular Weight:	170kd
Purification:	affinity purified
Form:	liquid
Buffer:	PBS containing 50% glycerol, 0.5% BSA and 0.02% sodium azide
Storage:	Store at -20°C. Avoid repeated freeze-thaw cycles.
Background:	This gene encodes a protein which is phosphorylated by insulin receptor tyrosine kinase Mutations in this gene are associated with type II diabetes and susceptibility to insulin resistance



Western Blot analysis of 293 cells using Phospho-IRS-1(S307) Polyclonal Antibody diluted at 1:1000



Immunohistochemical analysis of paraffin-embedded Human breast cancer. Antibody was diluted at 1:100(4° overnight). High-pressure and temperature Tris-EDTA,pH8.0 was used for antigen retrieval. Negative control (right) obtained from antibody was pre-absorbed by immunogen peptide.

Immunohistochemical analysis of paraffin-embedded Human breast cancer. Antibody was diluted at 1:100(4° overnight). High-pressure and temperature Tris-EDTA,pH8.0 was used for antigen retrieval. Negative Control (right) obtained from antibody was pre-absorbed by immunogen peptide