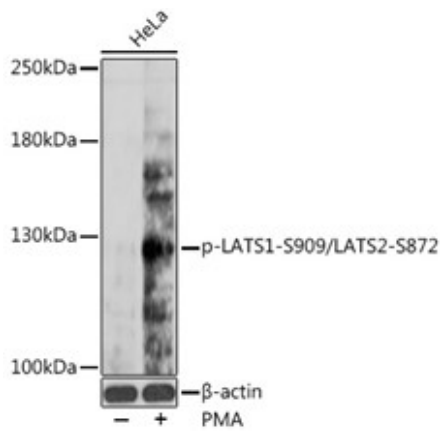

Product name:	Phospho-LATS1/2 (S909/S872)
Cat number:	ABP-0904
Conjugate:	Unconjugated
Size:	100 ug
Clone:	Poly
Concentration:	1mg/ml
Host:	Rb
Isotype:	IgG
Immunogen:	A phospho specific peptide corresponding to residues surrounding S909 of human LATS1.
Reactivity:	Hu
Applications:	WB 1:1000
Molecular Weight:	76kDa/126kDa
Form:	liquid
Buffer:	PBS with 0.02% sodium azide, 50% glycerol, pH7.3
Storage:	Store at 2-8°C. Do not freeze. For longer term store at: -20°C
Background:	<p>The protein encoded by this gene is a putative serine/threonine kinase that localizes to the mitotic apparatus and complexes with cell cycle controller CDC2 kinase in early mitosis. The protein is phosphorylated in a cell-cycle dependent manner, with late prophase phosphorylation remaining through metaphase. The N-terminal region of the protein binds CDC2 to form a complex showing reduced H1 histone kinase activity, indicating a role as a negative regulator of CDC2/cyclin A. In addition, the C-terminal kinase domain binds to its own N-terminal region, suggesting potential negative regulation through interference with complex formation via intramolecular binding. Biochemical and genetic data suggest a role as a tumor suppressor. This is supported by studies in knockout mice showing development of soft-tissue sarcomas, ovarian stromal cell tumors and a high sensitivity to carcinogenic treatments..</p>



Western blot analysis of extracts of HeLa cells, using phospho-LATS1-S909/LATS2-S872 antibody at 1:1000 dilution. HeLa cells were treated by PMA/TPA (200 nM) at 37°C for 15 minutes after serum-starvation overnight. Secondary antibody: HRP Goat Anti-Rabbit IgG (H+L) at 1:10000 dilution. Lysates/proteins: 25ug per lane. Blocking buffer: 3% BSA. Detection: ECL West Pico. Exposure time: 90s.