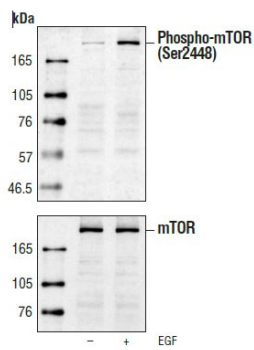
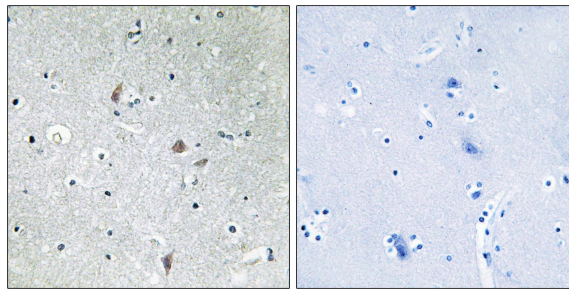
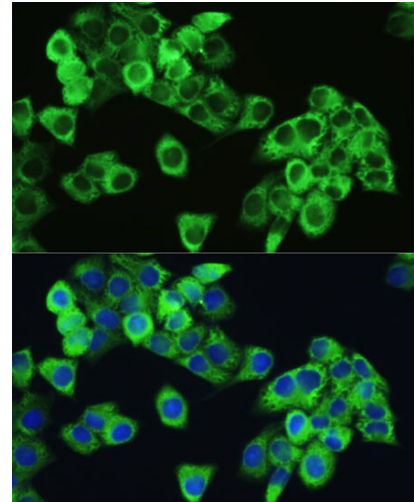

Product name:	Phospho-mTOR (S2448)
Cat number:	AB-82763
Conjugate:	Unconjugated
Size:	100 ug
Clone:	Poly
Concentration:	1mg/ml
Host:	Rb
Isotype:	IgG
Reactivity:	Hu, Ms, Rt
Applications:	Western Blot: 1:500 - 1:2000. Immunohistochemistry: 1:100 - 1:300. Immunofluorescence: 1:200 - 1:1000. ELISA: 1:40000.
Molecular Weight:	289 kDa
Purification:	Polyclonal antibodies are produced by immunizing animals with a synthetic phosphopeptide corresponding to residues surrounding Ser2448 of human mTOR. Antibodies are purified by protein A and peptide affinity chromatography.
Form:	liquid
Buffer:	Supplied in PBS containing 50% glycerol , 0,5% BSA and 0,02% sodium Azdide
Storage:	Store at -20°C. Do not aliquot the antibody.
Background:	The mammalian target of rapamycin (mTOR, FRAP, RAFT) is a Ser/Thr protein kinase (1-3) that functions as an ATP and amino acid sensor to balance nutrient availability and cell growth (4,5).When sufficient nutrients are available, mTOR responds to a phosphatidic acid-mediated signal to transmit a positive signal to p70 S6 kinase and participate in the inactivation of the eIF4E inhibitor, 4E-BP1 (6). These events result in the translation of specific mRNA subpopulations. mTOR is phosphorylated at Ser2448 via the PI3 kinase/Akt signaling pathway and autophosphorylated at Ser2481 (7,8). mTOR plays a key role in cell growth and homeostasis and may be abnormally regulated in tumors. For these reasons, mTOR is currently under investigation as a potential target for anticancer therapy (9). PhosphomTOR (Ser2448) Antibody detects endogenous levels of mTOR only when phosphorylated at Ser2448.



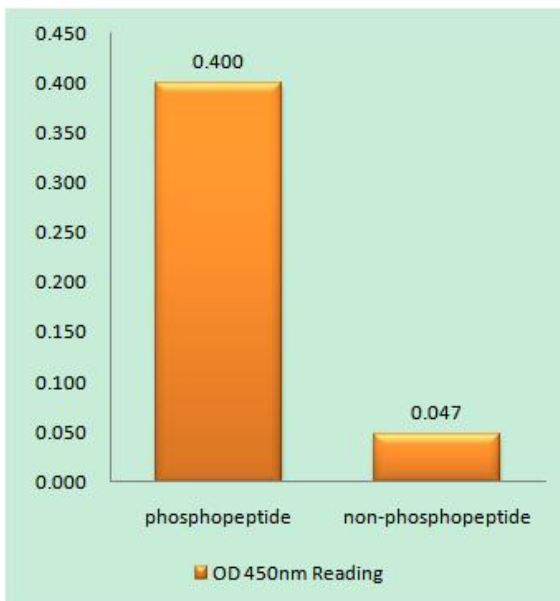
Western blot analysis of extracts from 293 cells (starved for 16 hours) untreated or EGF-treated (100 ng/ml), using PhosphomTOR (Ser2448) Antibody (upper) or control mTOR Antibody (lower).



Immunohistochemistry analysis of paraffin-embedded human brain, using mTOR (Phospho-Ser2448) Antibody. The picture on the right is blocked with the phospho peptide.



Immunofluorescence analysis of HeLa cells using Phospho-MTOR-S2448 antibody at dilution of 1:100. Blue: DAPI for nuclear staining.



Enzyme-Linked Immunosorbent Assay (Phospho-ELISA) for Immunogen Phosphopeptide (Phospho-left) and Non-Phosphopeptide (Phospho-right), using Mtor (Phospho-Ser2448) Antibody