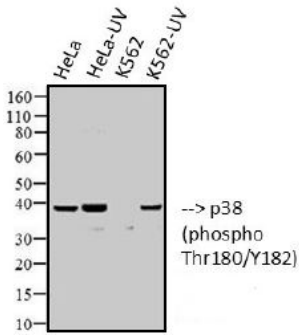
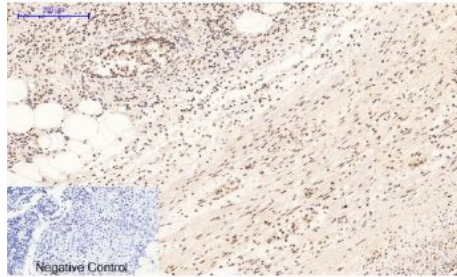


---

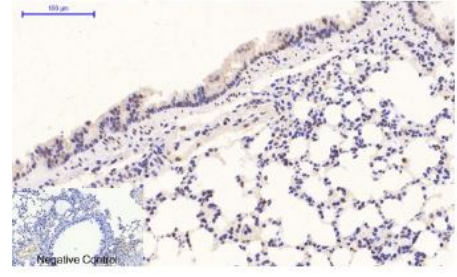
<b>Product name:</b>	Phospho-p38 MAPK-T180/Y182 Rabbit Monoclonal Antibody
<b>Cat number:</b>	MAB-190319
<b>Conjugate:</b>	Unconjugated
<b>Size:</b>	100 ug
<b>Clone:</b>	D3F9
<b>Concentration:</b>	1mg/ml
<b>Host:</b>	Rabbit
<b>Isotype:</b>	IgG
<b>Immunogen:</b>	The antiserum was produced against synthesized peptide derived from human p38 MAPK around the phosphorylation site of Thr179 and Tyr181. AA range:151-200
<b>Reactivity:</b>	Human,Mouse,Rat
<b>Applications:</b>	Western Blot: 1:500-2000 Immunofluorescence: 1:100-500 Immunocytochemistry: 1:100-500 Immunohistochemistry (paraffin-embedded tissues): 1:100-500 Flow Cytometry: 1:50-200
<b>Molecular Weight:</b>	41 kDa
<b>Purification:</b>	Monoclonal antibody is produced by immunizing animals with a synthetic phosphopeptide corresponding to residues surrounding Thr180/Tyr182 of human p38 MAPK
<b>Form:</b>	liquid
<b>Buffer:</b>	Liquid in PBS containing 50% glycerol, 0.5% BSA and 0.02% sodium azide.
<b>Storage:</b>	Store at -20°C. Avoid freeze / thaw cycles.
<b>Background:</b>	p38 MAP kinase (MAPK), also called RK (1) or CSBP (2), is the mammalian orthologue of the yeast HOG kinase which participates in a signaling cascade controlling cellular responses to cytokines and stress (1-4). Four isoforms of p38 MAP kinase, p38 $\alpha$ , $\beta$ , $\gamma$ (also known as ERK6 or SAPK3) and $\delta$ (also known as SAPK4) have been identified. Similar to the SAPK/JNK pathway, p38 MAP kinase is activated by a variety of cellular stresses including osmotic shock, inflammatory cytokines, lipopolysaccharides (LPS), UV light and growth factors (1-5). MKK3, MKK6 and SEK activate p38 MAP kinase by phosphorylation at Thr180 and Tyr182. Activated p38 MAP kinase has been shown to phosphorylate and activate MAPKAP kinase 2 (3) and to phosphorylate the transcription factors ATF-2 (5), Max (6) and MEF2 (5-8). Phospho-p38 MAPK (Thr180/Tyr182) (D3F9) XP® Rabbit mAb detects endogenous levels of p38 MAPK only when phosphorylated at Thr180 and Tyr182. This antibody does not cross-react with the phosphorylated forms of either p42/44 MAPK or SAPK/JNK.



Western blot analysis of extracts from HeLa (+UV), HeLa (-UV), K562 (+UV), K562 (-UV) cells using Phospho-p38 MAPK (Thr180/Tyr182) antibody.



Immunohistochemical analysis of human appendix tissue. Anti-Phospho-p38 (T180/Y182) at 1:200 (4°C, overnight). Antigen retrieval - Sodium Citrate pH6 (>98°C, 20min). Secondary - 1:200 (room temp, 30min). Negative control - Secondary only



Immunohistochemical analysis of mouse lung tissue. MAB-190319 was diluted at 1:200 (4°C, overnight). Sodium citrate pH6.0 was used for antibody retrieval (>98°C, 20min). Secondary antibody was diluted at 1:200 (room temperature, 30min). Negative control plate was secondary antibody only.