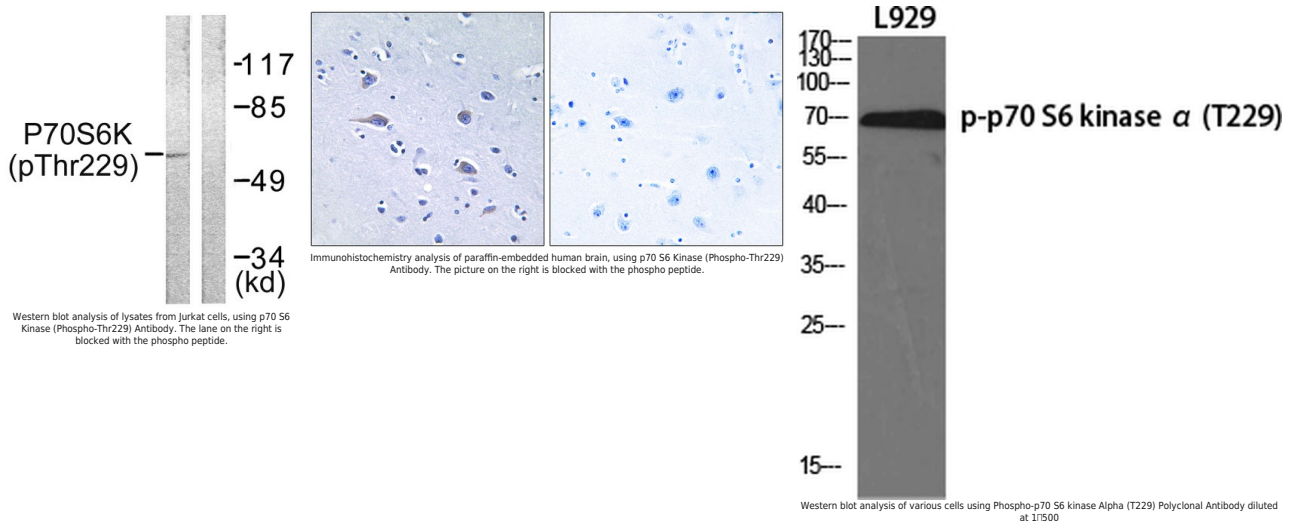
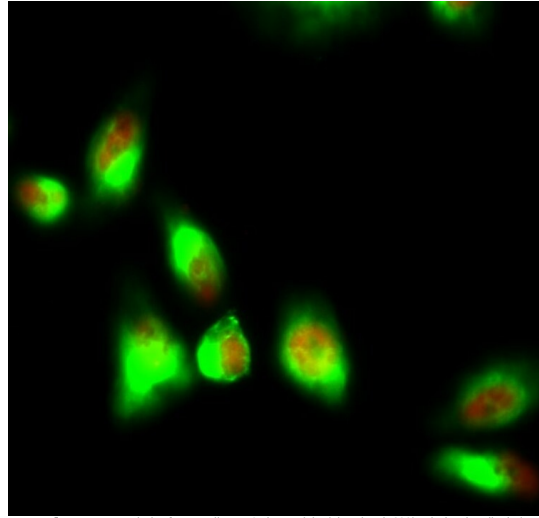
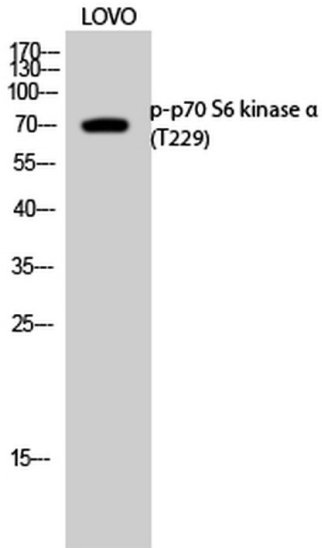


<b>Product name:</b>	Phospho-p70 S6k (T229)
<b>Cat number:</b>	ABP10859
<b>Conjugate:</b>	Unconjugated
<b>Size:</b>	100 ug
<b>Clone:</b>	Poly
<b>Concentration:</b>	1mg/ml
<b>Host:</b>	Rb
<b>Isotype:</b>	IgG
<b>Immunogen:</b>	Synthesized peptide derived from human p70 S6 kinase alpha around the phosphorylation site of T229.
<b>Reactivity:</b>	Hu, Ms, Rt
<b>Applications:</b>	Western Blot: 1:500-1:2000 Immunohistochemistry: 1:100-1:300 Immunofluorescence: 1:200-1:1000 ELISA: 1:5000
<b>Purification:</b>	The antibody was affinity-purified from rabbit antiserum by affinity-chromatography using a epitope-specific immunogen.
<b>Form:</b>	liquid
<b>Buffer:</b>	Liquid in PBS containing 50% glycerol, 0.5% BSA and 0.02% sodium azide.
<b>Storage:</b>	Store at -20°C. Avoid freeze / thaw cycles.
<b>Background:</b>	Phospho-p70 S6 kinase alpha (T229) polyclonal antibody detects endogenous levels of p70 S6 kinase alpha protein only when phosphorylated at T229.





Immunofluorescence analysis of HeLa cell, 1, p70 Kinase Alpha (phospho Thr229) Polyclonal Antibody (Red) was diluted at 1:200 (4°C overnight). Caspase-8 monoclonal Antibody (2G32) (green) was diluted at 1:200 (4°C overnight). 2, Goat Anti Rabbit Alexa Fluor 594 was diluted at 1:1000 (room temperature, 50min). Goat Anti Mouse Alexa Fluor 488 was diluted at 1:1000 (room temperature, 50min).

Western blot analysis of LOVO cells using Phospho-p70 S6 kinase Alpha (T229) Polyclonal Antibody diluted at 1:500.