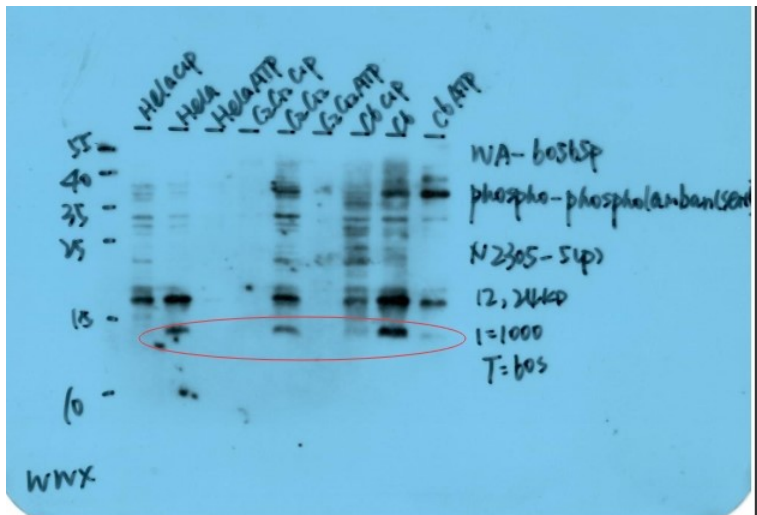


<b>Product name:</b>	Phospho-PLN-S16 pAb
<b>Cat number:</b>	ABP-0907
<b>Conjugate:</b>	Unconjugated
<b>Size:</b>	100 ug
<b>Clone:</b>	Poly
<b>Concentration:</b>	1mg/ml
<b>Host:</b>	Rb
<b>Isotype:</b>	IgG
<b>Immunogen:</b>	A phospho specific peptide corresponding to residues surrounding Serine 16 of Human Phospholamban.
<b>Reactivity:</b>	Human
<b>Applications:</b>	Western Blot: 1:500 - 1:2000
<b>Molecular Weight:</b>	Predicted MW: 6 kDA Observed MW: 13 kDA
<b>Form:</b>	liquid
<b>Buffer:</b>	Liquid in PBS containing 0.02% sodium azide, 50% glycerol, Ph7.3
<b>Storage:</b>	At +4°C for short term. For longer term store at -20°C, avoid repeat freeze-thaw cycles.



Western blot on different Cells