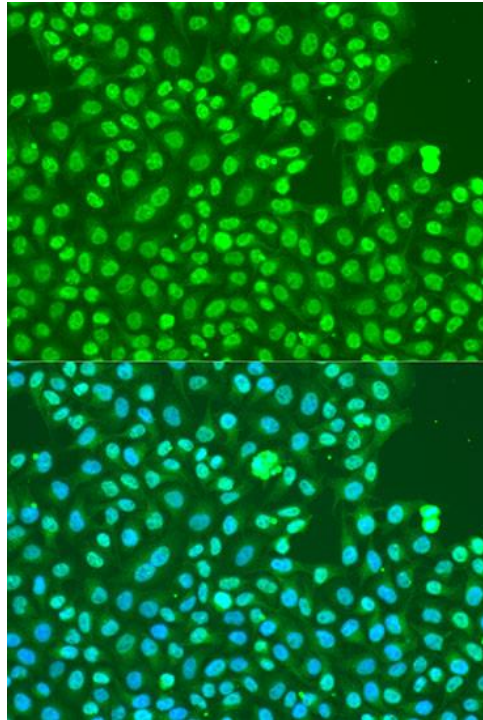
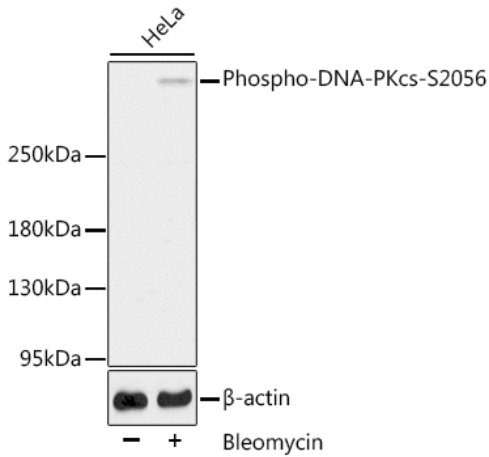


Product name:	Phospho-DNA-PKcs-S2056 Rabbit Polyclonal Antibody
Cat number:	ABP10327
Conjugate:	Unconjugated
Size:	100 ug
Clone:	Poly
Concentration:	1mg/ml
Host:	Rabbit
Isotype:	IgG
Immunogen:	A synthetic phosphorylated peptide around S2056 of human DNA-PKcs.
Reactivity:	Human
Applications:	Western Blot: 1:500 - 1:2000 Immunofluorescence: 1:50 - 1:200 Immunocytochemistry: 1:50 - 1:200
Molecular Weight:	469kDa
Purification:	Affinity purification
Form:	liquid
Buffer:	PBS with 0.01% thimerosal, 50% glycerol, pH7.3.
Storage:	Store at -20°C. Avoid freeze / thaw cycles.
Background:	This gene encodes the catalytic subunit of the DNA-dependent protein kinase (DNA-PK). It functions with the Ku70/Ku80 heterodimer protein in DNA double strand break repair and recombination. The protein encoded is a member of the PI3/PI4-kinase family.



Immunofluorescence analysis of U2OS cells using Phospho-DNA-PKcs-S2056 antibody at dilution of 1:100. Blue: DAPI for nuclear staining.