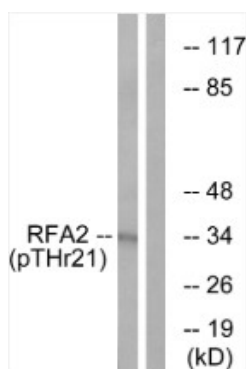
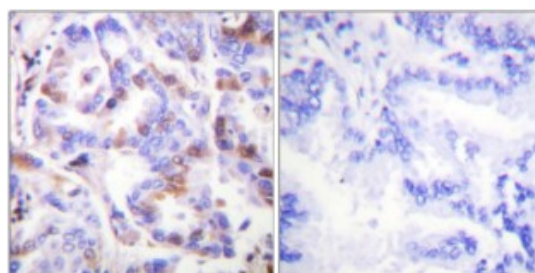


<b>Product name:</b>	Phospho-RPA32 (T21)
<b>Cat number:</b>	ABP11016
<b>Conjugate:</b>	Unconjugated
<b>Size:</b>	100 ug
<b>Clone:</b>	Poly
<b>Concentration:</b>	1mg/ml
<b>Host:</b>	Rb
<b>Isotype:</b>	IgG
<b>Immunogen:</b>	Synthesized peptide derived from human RPA32 around the phosphorylation site of T21.
<b>Reactivity:</b>	Hu, Ms
<b>Applications:</b>	Western Blot: 1:500-1:2000 Immunohistochemistry: 1:100-1:300 ELISA: 1:10000
<b>Molecular Weight:</b>	35kDa
<b>Purification:</b>	The antibody was affinity-purified from rabbit antiserum by affinity chromatography using epitope-specific immunogen.
<b>Form:</b>	liquid
<b>Buffer:</b>	Liquid in PBS containing 50% glycerol, 0.5% BSA and 0.02% sodium azide
<b>Storage:</b>	Store at -20°C, and avoid repeat freeze-thaw cycles.
<b>Background:</b>	Phospho-RPA32 (T21) Polyclonal Antibody detects endogenous levels of RPA32 protein only when phosphorylated at T21.



Western Blot Analysis using Phospho RPA32 (T21) antibody



Immunohistochemical Analysis using Phospho RPA32 (T21) antibody