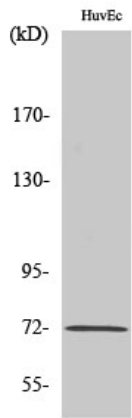
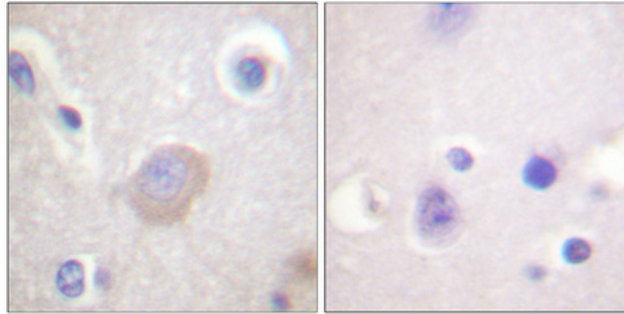


---

<b>Product name:</b>	Phospho SHP-2 (Tyr542) Rabbit Polyclonal antibody
<b>Cat number:</b>	ABP11215
<b>Conjugate:</b>	Unconjugated
<b>Size:</b>	100 ug
<b>Clone:</b>	POLY
<b>Concentration:</b>	1mg/ml
<b>Host:</b>	Rabbit
<b>Isotype:</b>	IgG
<b>Immunogen:</b>	The antiserum was produced against synthesized peptide derived from human SHP-2. The antibody was affinity-purified from rabbit antiserum by affinity-chromatography using epitope-specific immunogen.
<b>Reactivity:</b>	Human, Mouse, Rat
<b>Applications:</b>	Western Blot: 1/500 - 1/2000. Immunohistochemistry: 1/100 - 1/300 Immunofluorescence: 1:50-1:200 ELISA:1/10000.
<b>Molecular Weight:</b>	70kD
<b>Purification:</b>	The antibody was affinity-purified from rabbit antiserum by affinity-chromatography using epitope-specific immunogen.
<b>Form:</b>	Liquid
<b>Buffer:</b>	Liquid in PBS containing 50% glycerol, 0.5% BSA and 0.02% sodium azide.
<b>Storage:</b>	Store at -20°C. Avoid repeated freeze-thaw cycles.
<b>Background:</b>	The protein encoded by this gene is a member of the protein tyrosine phosphatase (PTP) family. PTPs are known to be signaling molecules that regulate a variety of cellular processes including cell growth, differentiation, mitotic cycle, and oncogenic transformation. This PTP contains two tandem Src homology-2 domains, which function as phospho-tyrosine binding domains and mediate the interaction of this PTP with its substrates. This PTP is widely expressed in most tissues and plays a regulatory role in various cell signaling events that are important for a diversity of cell functions, such as mitogenic activation, metabolic control, transcription regulation, and cell migration. Mutations in this gene are a cause of Noonan syndrome as well as acute myeloid leukemia.



Western Blot analysis of various cells using Phospho-SH-PTP2 (Y542) Polyclonal Antibody diluted at 1:1000



Immunohistochemical analysis of paraffin-embedded Human brain. Antibody was diluted at 1:100(4° overnight). High-pressure and temperature Tris-EDTA,pH8.0 was used for antigen retrieval. Negative control (right) obtained from antibody was pre-absorbed by immunogen peptide