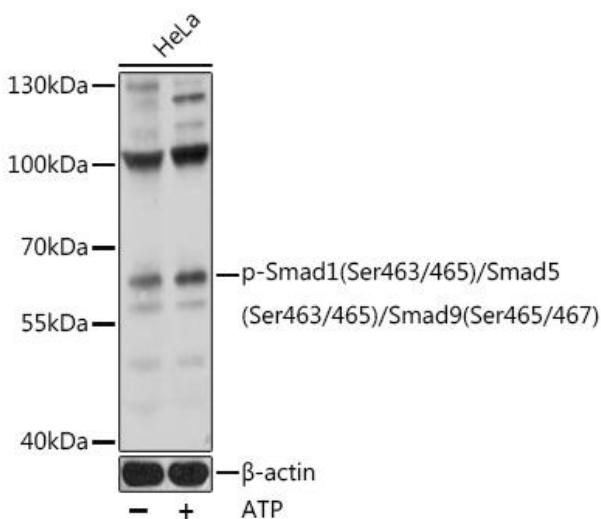


Product name:	Phospho-SMAD1 SER 463/465+SMAD5 Ser463/465+SMAD9 Ser465/467)
Cat number:	ABP-0850
Conjugate:	Unconjugated
Size:	100 ug
Clone:	Poly
Concentration:	1mg/ml
Host:	Rb
Isotype:	IgG
Immunogen:	A phospho specific peptide corresponding to residues surrounding S463 of human Smad1
Reactivity:	Hu, Ms, Rt
Applications:	Western Blot: 1:500 - 1:2000
Molecular Weight:	60 kDa
Purification:	Affinity purification
Form:	liquid
Buffer:	PBS with 0.02% sodium azide, 50% glycerol, pH7.4
Storage:	Store at -20°C. Avoid freeze / thaw cycles.



Western blot analysis of extracts of HeLa cells, using PhosphoSmad1(Ser463/465)/Smad5(Ser463/465)/Smad9(Ser465/467) Polyclonal antibody at 1:1000 dilution. HeLa cells were treated by ATP (5 mM) at 30°C for 1 hour. Secondary antibody: HRP Goat Anti-Rabbit IgG (H+L) at 1:10000 dilution. Lysates/proteins: 25ug per lane. Blocking buffer: 3% BSA. Detection: ECL West Pico Plus. Exposure time: 60s.