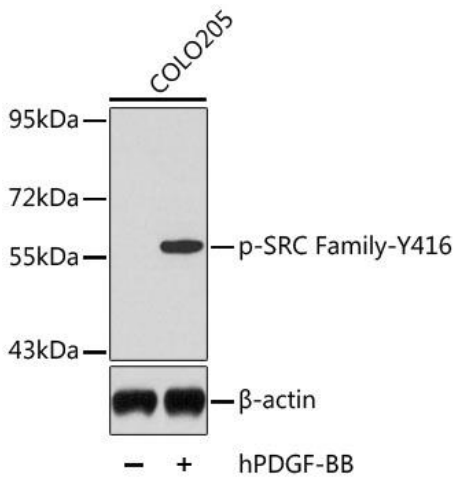
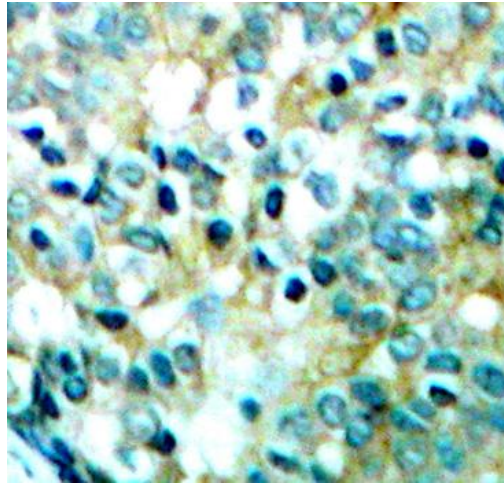

Product name:	Phospho-Src-Y416
Cat number:	ABP-0452
Conjugate:	Unconjugated
Size:	100 ug
Clone:	Poly
Concentration:	1mg/ml
Host:	Rb
Isotype:	IgG
Immunogen:	A phospho specific peptide corresponding to residues surrounding Y416 of human SRC Family
Reactivity:	Hu, Ms, Rt
Applications:	Western Blot: 1:500 - 1:1000 Immunohistochemistry: 1:50 - 1:100
Molecular Weight:	60kDa
Purification:	Affinity purification
Form:	liquid
Buffer:	PBS with 0.02% sodium azide, 50% glycerol, pH7.3.
Storage:	Store at -20°C. Avoid freeze / thaw cycles.
Background:	This gene is highly similar to the v-src gene of Rous sarcoma virus. This protooncogene may play a role in the regulation of embryonic development and cell growth. The protein encoded by this gene is a tyrosine-protein kinase whose activity can be inhibited by phosphorylation by c-SRC kinase. Mutations in this gene could be involved in the malignant progression of colon cancer. Two transcript variants encoding the same protein have been found for this gene.



Western blot analysis of extracts from COLO205 cells, using Phospho-SRC Family-Y416 antibody.



Immunohistochemistry of paraffinembedded human breast carcinoma tissue, using Phospho-SRC-Y416 antibody.