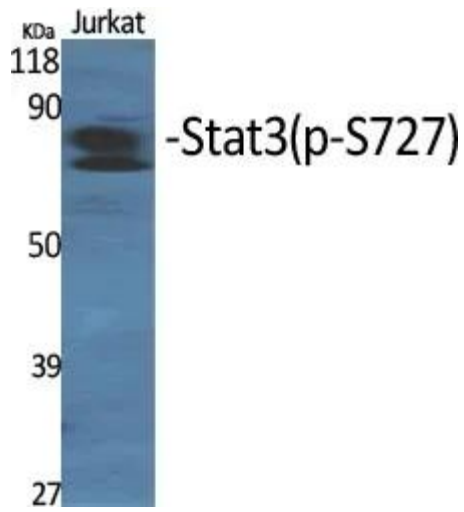


---

<b>Product name:</b>	Phospho-STAT3 (Ser727) Rabbit Polyclonal Antibody
<b>Cat number:</b>	ABN00824
<b>Conjugate:</b>	Unconjugated
<b>Size:</b>	100µL
<b>Clone:</b>	POLY
<b>Concentration:</b>	1mg/ml
<b>Host:</b>	Rabbit
<b>Isotype:</b>	IgG
<b>Immunogen:</b>	The antiserum was produced against synthesized peptide derived from human STAT3 around the phosphorylation site of Ser727. AA range:694-743
<b>Reactivity:</b>	Human,Mouse,Rat,Monkey
<b>Applications:</b>	WB 1:500-1:1000,IHC 1:50-1:100,ICC/IF 1:50-1:200,ELISA 1:5000-1:20000,IP 1:20-1:50
<b>Molecular Weight:</b>	85 kDa
<b>Purification:</b>	Affinity purification
<b>Form:</b>	liquid
<b>Buffer:</b>	Liquid in PBS containing 50% glycerol, 0.5% protective protein and 0.02% sodium azide, pH 7.3.
<b>Storage:</b>	Store at 4°C short term. Aliquot and store at -20°C long term. Avoid freeze/thaw cycles.
<b>Background:</b>	The protein encoded by this gene is a member of the STAT protein family. In response to cytokines and growth factors, STAT family members are phosphorylated by the receptor associated kinases, and then form homo- or heterodimers that translocate to the cell nucleus where they act as transcription activators.



Western blot analysis of Phospho-STAT3 (Ser727) in various lysates using Phospho-STAT3 (Ser727) antibody.