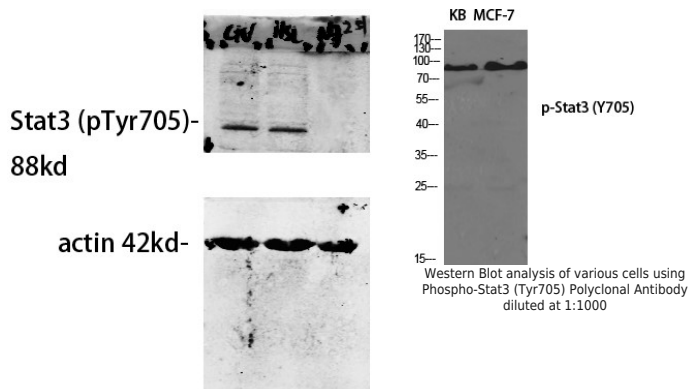
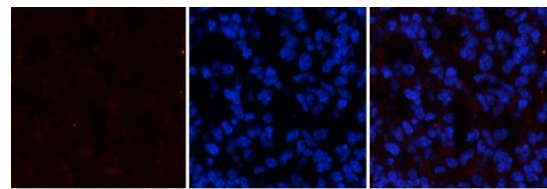


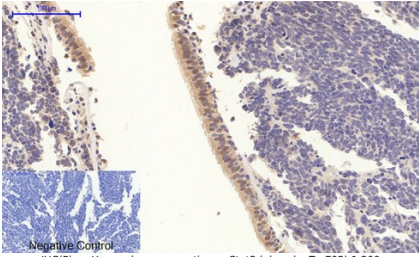
Product name: Phospho-Stat3 (Y705)
Cat number: ABP-4001
Conjugate: Unconjugated
Size: 100 ug
Clone: Poly
Concentration: 1mg/ml
Host: Rb
Isotype: IgG
Immunogen: Synthesized peptide derived from human Stat3 around the phosphorylation site of Tyr705.
Reactivity: Hu, Ms, Rt
Applications: Western Blot: 1:1000 Immunohistochemistry (paraffin-embedded tissues): 1:200 Immunofluorescence: 1:100 Immunoprecipitation: 1-2,5 ug/mg lysate ELISA: 1:5000
Purification: The antibody was affinity-purified from rabbit antiserum by affinity-chromatography using epitope-specific immunogen.
Form: liquid
Buffer: Liquid in PBS containing 50% glycerol, 0.5% BSA and 0.02% sodium azide.
Storage: Store at -20°C. Do not aliquot the antibody.
Background: The protein encoded by this gene is a member of the STAT protein family. In response to cytokines and growth factors, STAT family members are phosphorylated by the receptor associated kinases, and then form homo- or heterodimers that translocate to the cell nucleus where they act as transcription activators. Phospho-Stat3 (Tyr705) Polyclonal Antibody detects endogenous levels of Stat3 protein only when phosphorylated at Tyr705



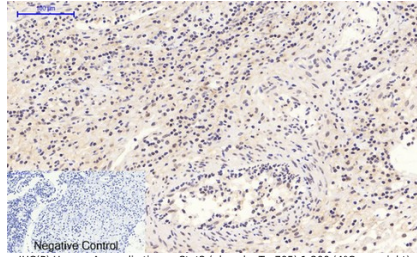
Western Blot analysis of our customer's samples using primary antibody diluted at 1:500. The picture was kindly provided by our customer.



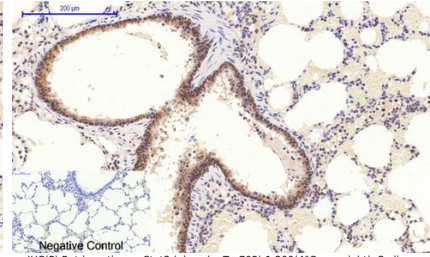
Immunofluorescence analysis of mouse-spleen tissue. A) Stat3 (phospho Tyr705) Polyclonal Antibody (red) was diluted at 1:100(4°C, overnight). B) Cy3 labeled Secondary antibody was diluted at 1:300(room temperature, 50min). C) Picture B: DAPI(blue) 10min. Picture A:Target. Picture B: DAPI. Picture C: merge of A+B



Negative Control
IHC(P) on Human-lung-cancer tissue. Stat3 (phospho Tyr705) 1:200 (4°C, overnight). Sodium citrate pH 6.0 was used for antibody retrieval (>98°C, 20min). Secondary antibody at 1:200 (RT, 30min). Negative control was used by secondary antibody only.



Negative Control
IHC(P) Human-Appendix tissue. Stat3 (phospho Tyr705) 1:200 (4°C, overnight). Sodium citrate pH 6.0 was used for antibody retrieval (>98°C, 20min). Secondary antibody was diluted at 1:200 (RT, 30min). Negative control was used by secondary antibody only.



Negative Control
IHC(P) Rat-lung tissue. Stat3 (phospho Tyr705) 1:200 (4°C, overnight). Sodium citrate pH 6.0 was used for antibody retrieval (>98°C, 20min). Secondary antibody was diluted at 1:200 (RT, 30min). Negative control was used by secondary antibody only.