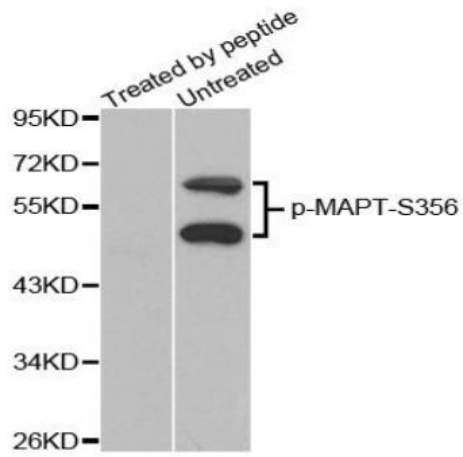
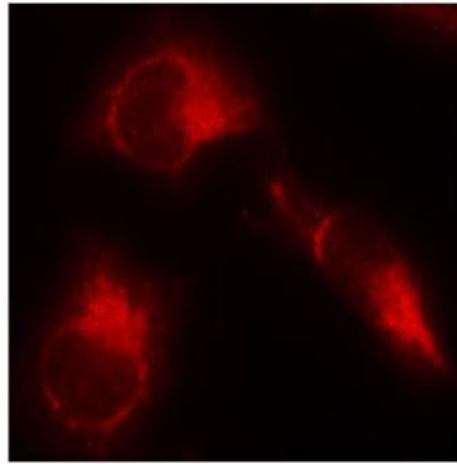

Product name:	Phospho-Tau (S356)
Cat number:	ABP-0162
Conjugate:	Unconjugated
Size:	100 ug
Clone:	Poly
Concentration:	1mg/ml
Host:	Rb
Isotype:	IgG
Immunogen:	A phospho specific peptide corresponding to residues surrounding S356 of human MAPT.
Reactivity:	Hu, Ms, Rt
Applications:	Western Blot: 1:1000 Immunofluorescence: 1:100-1:200
Molecular Weight:	79kDa
Purification:	Affinity purification
Form:	liquid
Buffer:	PBS with 0.02% sodium azide, 50% glycerol, pH7.3.
Storage:	Store at -20°C. Avoid freeze / thaw cycles.
Background:	This gene encodes the microtubule-associated protein tau (MAPT) whose transcript undergoes complex, regulated alternative splicing, giving rise to several mRNA species. MAPT transcripts are differentially expressed in the nervous system, depending on stage of neuronal maturation and neuron type. MAPT gene mutations have been associated with several neurodegenerative disorders such as Alzheimer's disease, Pick's disease, frontotemporal dementia, cortico-basal degeneration and progressive supranuclear palsy.



Western blot analysis of extracts from mouse brain tissue, using phospho-Tau-S356 antibody.



Immunofluorescence staining of methanol-fixed HeLa cells, using phospho-Tau-S356 antibody.