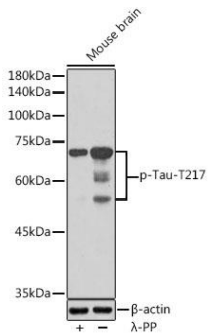
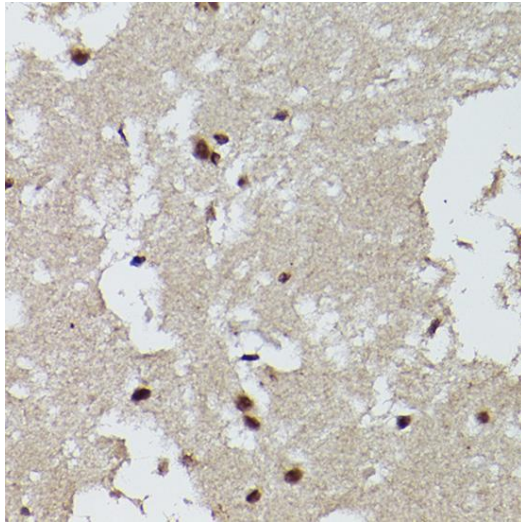


---

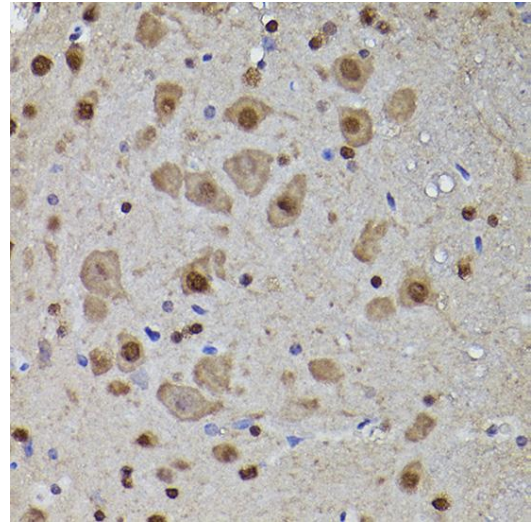
<b>Product name:</b>	Phospho-Tau (T217)
<b>Cat number:</b>	AB-75000
<b>Conjugate:</b>	Unconjugated
<b>Size:</b>	100 ug
<b>Clone:</b>	Poly
<b>Concentration:</b>	1mg/ml
<b>Host:</b>	Rb
<b>Isotype:</b>	IgG
<b>Immunogen:</b>	A phospho synthetic peptide corresponding to residues surrounding T217 of Human Tau
<b>Reactivity:</b>	Hu, Ms, Rt
<b>Applications:</b>	Western Blot: 1:500 - 1:2000 Immunohistochemistry: 1:50 - 1:200
<b>Molecular Weight:</b>	50-80kDa
<b>Purification:</b>	Affinity purification
<b>Form:</b>	liquid
<b>Buffer:</b>	PBS with 0.02% sodium azide, 50% glycerol, pH 7.3.
<b>Storage:</b>	Store at -20°C. Avoid freeze / thaw cycles.
<b>Background:</b>	This gene encodes the microtubule-associated protein tau (MAPT) whose transcript undergoes complex, regulated alternative splicing, giving rise to several mRNA species. MAPT transcripts are differentially expressed in the nervous system, depending on stage of neuronal maturation and neuron type. MAPT gene mutations have been associated with several neurodegenerative disorders such as Alzheimer's disease, Pick's disease, frontotemporal dementia, cortico-basal degeneration and progressive supranuclear palsy.



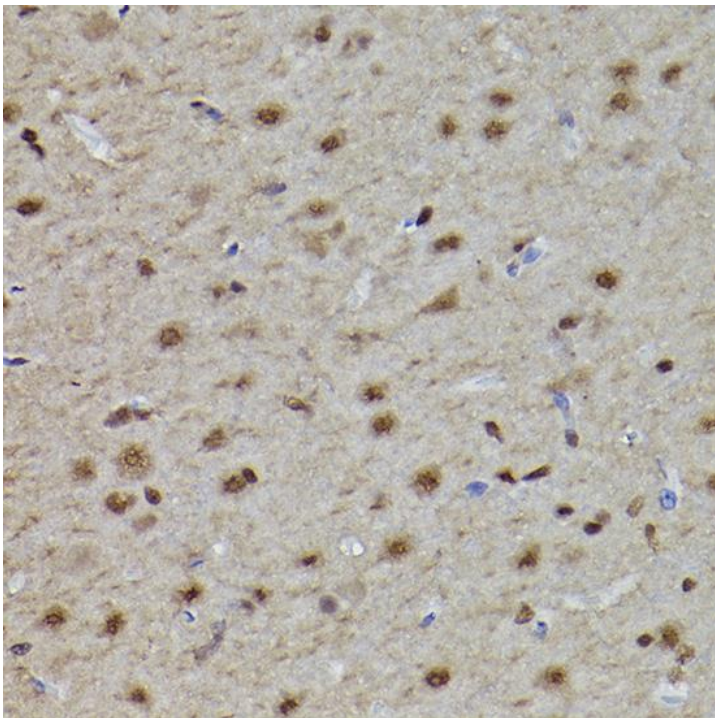
Western blot analysis of extracts of Mouse brain, using Phospho-Tau-T217 antibody at 1:1000 dilution. Mouse brain were treated by  $\lambda$ -PP mixed solution (1ul) at 30°C for 30 minutes. Secondary antibody: HRP Goat Anti-Rabbit IgG (H+L) at 1:10000 dilution. Lysates/proteins: 25ug per lane. Blocking buffer: 3% nonfat dry milk in TBST. Detection: ECL West Pico Plus. Exposure time: 90s.



Immunohistochemistry of paraffin embedded human brain using Phospho-Tau-T217 Rabbit pAb at dilution of 1:50 (40x lens).



Immunohistochemistry of paraffin embedded mouse brain using Phospho-Tau-T217 Rabbit pAb at dilution of 1:50 (40x lens).



Immunohistochemistry of paraffin embedded rat brain using Phospho-Tau-T217 Rabbit pAb at dilution of 1:50 (40x lens).