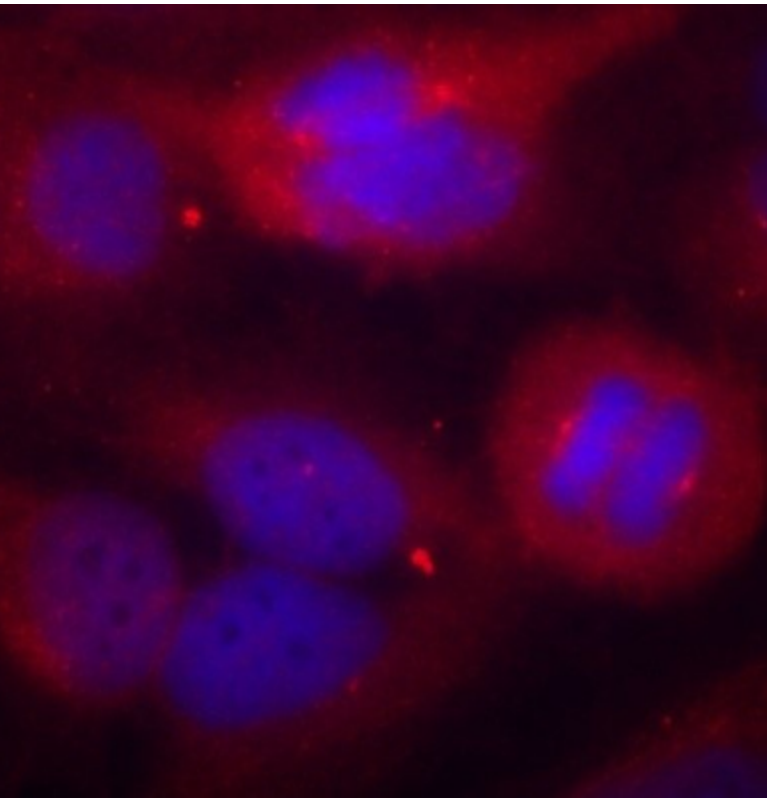


<b>Product name:</b>	Phospho-TH (S40)
<b>Cat number:</b>	ABP-0211
<b>Conjugate:</b>	Unconjugated
<b>Size:</b>	100 ug
<b>Clone:</b>	Poly
<b>Concentration:</b>	1mg/ml
<b>Host:</b>	Rb
<b>Isotype:</b>	IgG
<b>Immunogen:</b>	A phospho specific peptide corresponding to residues surrounding Ser40 of human TH
<b>Reactivity:</b>	Hu, Ms, Rt
<b>Applications:</b>	IF 1:100 - 1:200
<b>Purification:</b>	Affinity Purified
<b>Form:</b>	liquid
<b>Buffer:</b>	PBS with 0.02% sodium azide, 50% glycerol, pH7.4
<b>Storage:</b>	Store at -20°C. Avoid freeze / thaw cycles.
<b>Background:</b>	The protein encoded by this gene is involved in the conversion of tyrosine to dopamine. It is the rate-limiting enzyme in the synthesis of catecholamines, hence plays a key role in the physiology of adrenergic neurons. Mutations in this gene have been associated with autosomal recessive Segawa syndrome. Alternatively spliced transcript variants encoding different isoforms have been noted for this gene.



Immunofluorescence staining of methanol-fixed HeLa cells using Phospho-TH-S40 antibody.