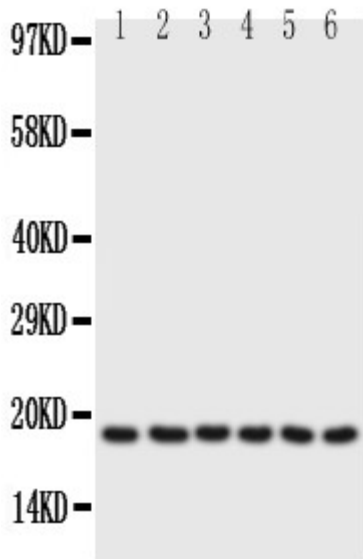

Product name:	PHOSPHOLAMBAN
Cat number:	AB-84130
Size:	100 ug
Clone:	POLY
Concentration:	1mg/ml
Host:	Rb
Isotype:	IgG
Immunogen:	A synthetic peptide corresponding to a sequence at the N-terminus of human PLN (2-16aa EKVQYLTRSAIRRAS), identical to the related rat and mouse sequences.
Reactivity:	Hu, Ms, Rt
Applications:	Western blot: 0.1-0.5µg/ml
Purification:	Aff. Pur.
Form:	Liquid
Buffer:	Liquid in Each vial contains 5mg BSA, 0.9mg NaCl, 0.2mg Na ₂ HPO ₄ , 0.05mg Thimerosal, 0.05mg NaN
Storage:	At +4°C for short term. For longer term store at -20°C, avoid repeat freeze-thaw cycles.
Background:	Phospholamban is a 52 amino acid integral membrane protein that regulates the Ca ²⁺ pump in cardiac muscle and skeletal muscle cells. The subsequent activation of the Ca(2+) pump leads to enhanced muscle relaxation rates, thereby contributing to the inotropic response elicited in heart by beta-agonists. Phospholamban is also expressed in slow-twitch skeletal muscle and some smooth muscle cells. McTiernan et al.(1999) observed that human ventricle and quadriceps displayed high levels of phospholamban transcripts and proteins, with markedly lower expression observed in smooth muscles, while the right atrium also expressed low levels of phospholamban. The structure of the human phospholamban gene closely resembles that reported for chicken, rabbit, rat, and mouse. Comparison of the human to other mammalian phospholamban genes indicated a marked conservation of sequence for at least 217 bp upstream of the transcription start site.



Western blot on different Cells using AB-84130 at a conc. of 0,5ug/ml Lane 1: Rat Heart Tissue Lysate at 50ug Lane 2: Rat Heart Tissue Lysate at 50ug Lane 3: CEM Whole Cell Lysate at 40ug Lane 4: MCF-7 Whole Cell Lysate at 40ug Lane 5: HT1080 Whole Cell Lysate at 40ug Lane 6: HELA Whole Cell Lysate at 40ug Predicted bind size: 6KD Observed bind size: 18KD