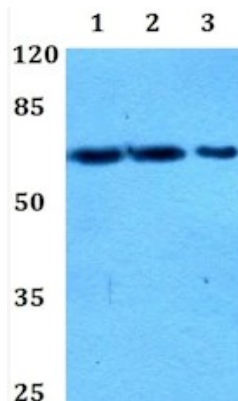


<b>Product name:</b>	PIF1 Rabbit Polyclonal Antibody
<b>Cat number:</b>	AB-84441
<b>Conjugate:</b>	Unconjugated
<b>Size:</b>	100 ug
<b>Clone:</b>	POLY
<b>Concentration:</b>	1mg/ml
<b>Host:</b>	Rb
<b>Isotype:</b>	IgG
<b>Immunogen:</b>	Synthesized peptide derived from human protein at AA range: 150-230
<b>Reactivity:</b>	Hu, Ms, Rt
<b>Applications:</b>	WB 1:500-2000 ELISA 1:5000-20000
<b>Molecular Weight:</b>	70kDa
<b>Purification:</b>	Aff. Pur.
<b>Form:</b>	Liquid
<b>Buffer:</b>	PBS containing 50% glycerol, 0.5% BSA and 0.02% sodium azide.
<b>Storage:</b>	Store at -20°C. Avoid repeated freeze-thaw cycles.
<b>Background:</b>	This gene encodes a DNA-dependent adenosine triphosphate (ATP)-metabolizing enzyme that functions as a 5'-to-3' DNA helicase. The encoded protein can resolve G-quadruplex structures and RNA-DNA hybrids at the ends of chromosomes. It also prevents telomere elongation by inhibiting the actions of telomerase. Alternative splicing and the use of alternative start codons results in multiple isoforms that are differentially localized to either the mitochondria or the nucleus.



Western Blot on PIF1 Antibody at Dilution 1:1000  
Lane 1 : HeLa whole cell lysate Lane 2 : Raw264.7  
whole cell lysate Lane 3 : PC12 whole cell lysate