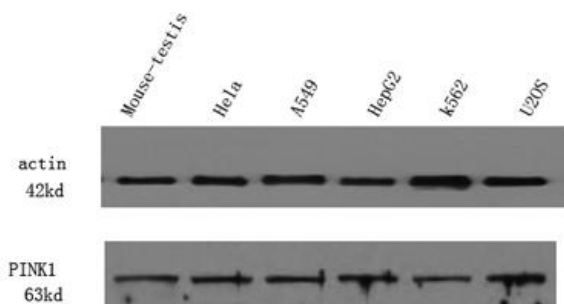


Product name:	PINK1 Rabbit Polyclonal Antibody
Cat number:	AB-84044
Conjugate:	Unconjugated
Size:	100 ug
Clone:	POLY
Concentration:	1mg/ml
Host:	Rabbit
Isotype:	IgG
Immunogen:	Synthesized peptide derived from part region of human protein.
Reactivity:	Human, Mouse, Rat
Applications:	Western Blot: 1:500-2000
Molecular Weight:	63kD
Purification:	The antibody was affinity-purified from rabbit antiserum by affinity-chromatography using epitope-specific immunogen.
Form:	Liquid
Buffer:	Liquid in PBS containing 50% glycerol, 0.5% BSA and 0.02% sodium azide.
Storage:	Store at -20°C. Avoid repeated freeze-thaw cycles.
Background:	This gene encodes a serine/threonine protein kinase that localizes to mitochondria. It is thought to protect cells from stress-induced mitochondrial dysfunction. Mutations in this gene cause one form of autosomal recessive early-onset Parkinson disease.



Western Blot analysis of various cell lysis. Primary Antibody was diluted at 1:1000. Secondary antibody was diluted at 1:10000