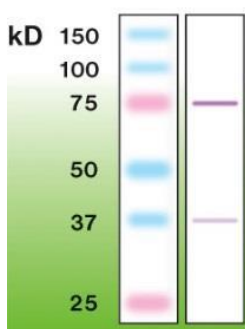
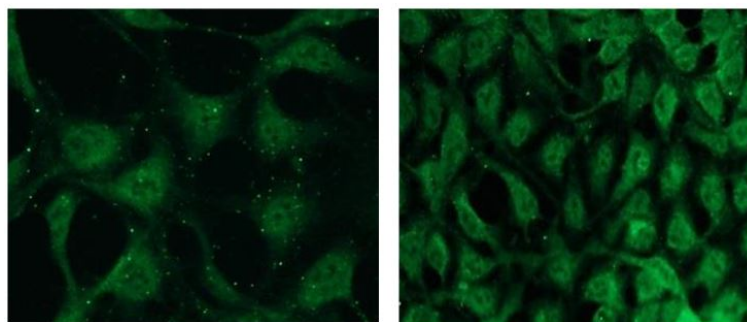


<b>Product name:</b>	PKC beta
<b>Cat number:</b>	MAB-94554
<b>Size:</b>	100 ug
<b>Clone:</b>	N11-S
<b>Concentration:</b>	1mg/ml
<b>Host:</b>	Rb
<b>Isotype:</b>	IgG
<b>Immunogen:</b>	Peptide derived from C-terminal sequence of human PKC-betaII. Antibody recognizes the epitope located between Asn663 - Lys 672.
<b>Reactivity:</b>	Hu, Ms, Rt
<b>Applications:</b>	Western blot: 1:5,000 ELISA: 1:10,000-1:50,000 Immunocytochemistry (ICC): to be tested by user Immunoprecipitation: to be tested by user
<b>Purification:</b>	Aff. Pur.
<b>Form:</b>	Liquid
<b>Buffer:</b>	20 mM Tris-HCl, pH 8.0
<b>Storage:</b>	10 µl aliquots at -20°C Avoid repeated freezing and thawing
<b>Background:</b>	Major clone of rabbit immunoglobulin corresponding to immunogenic peptide. PRECAUTIONS 1. Intended for professional In Vitro Diagnostic use in laboratories. 2. Do not use after expiration date stamped on vial label. 3. Avoid contamination of the reagent. 4. Any discrepancies in the recommended procedures stated in the working protocol may affect the final results. 5. The reagent contains sodium azide (NaN <sub>3</sub> ) which is highly toxic in higher concentrations. The concentration in the reagent (0.05%) is not considered as hazardous. 6. Disposal of waste material must be conducted in accordance with local regulations. 7. Wear appropriate Personal Protective Equipment to avoid contact with eyes and skin.



Anti - PKC-beta II Western blot of PKC-beta II in mouse brain crude lysate (50 µg of protein loaded).



Representative pictures of PKC-βII expression in HEK293 cells, visualized with clonal rabbit anti-PKC-βII monoclonal antibody. Primary antibody dilution - 1:200.