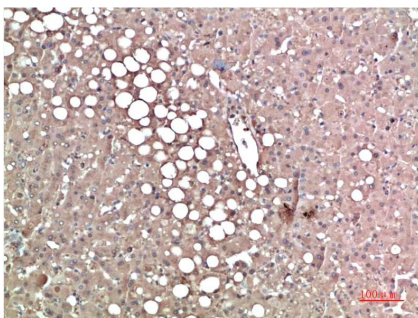
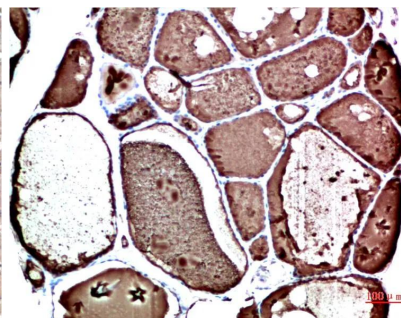


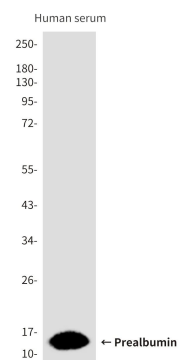
<b>Product name:</b>	Prealbumin (CL0290) Mouse Monoclonal Antibody
<b>Cat number:</b>	MABN00893
<b>Conjugate:</b>	Unconjugated
<b>Size:</b>	100µL
<b>Clone:</b>	CL0290
<b>Concentration:</b>	1mg/ml
<b>Host:</b>	Mouse
<b>Isotype:</b>	IgG1
<b>Immunogen:</b>	Recombinant Fragment Protein within Human TTR C-terminus.
<b>Reactivity:</b>	Human
<b>Applications:</b>	WB 1:500-1:1000,IHC 1:50-1:100
<b>Molecular Weight:</b>	16 kDa
<b>Purification:</b>	Affinity purification
<b>Form:</b>	liquid
<b>Buffer:</b>	Liquid in PBS containing 50% glycerol, 0.5% protective protein and 0.02% sodium azide, pH 7.3.
<b>Storage:</b>	Store at 4°C short term. Aliquot and store at -20°C long term. Avoid freeze/thaw cycles.
<b>Background:</b>	Thyroid hormone-binding protein. Probably transports thyroxine from the bloodstream to the brain.



Immunohistochemistry analysis of paraffin-embedded Human Liver Carcinoma Tissue using Prealbumin (CL0290) antibody.High-pressure and temperature Sodium Citrate pH 6.0 was used for antigen retrieval.



Immunohistochemical analysis of paraffin-embedded Human tonsils using Prealbumin (CL0290) antibody.High-pressure and temperature Sodium Citrate pH 6.0 was used for antigen retrieval.



Western blot analysis of Prealbumin (CL0290) in HeLa, Jurkat, mouse brain, MOLT4, Human serum lysates using Prealbumin (CL0290) antibody