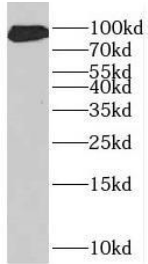
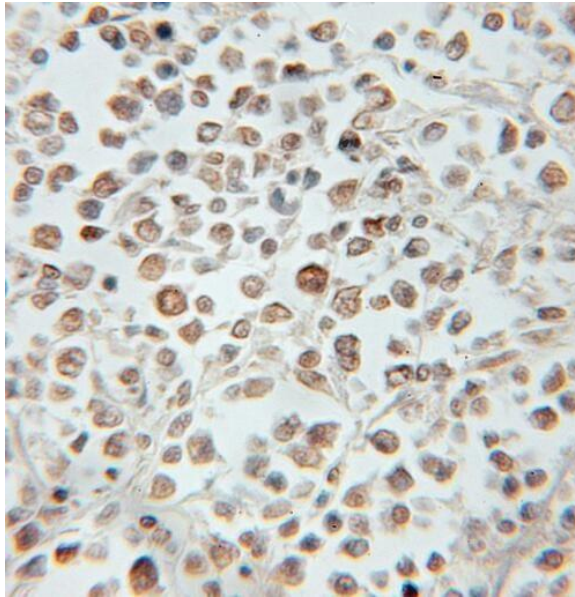


---

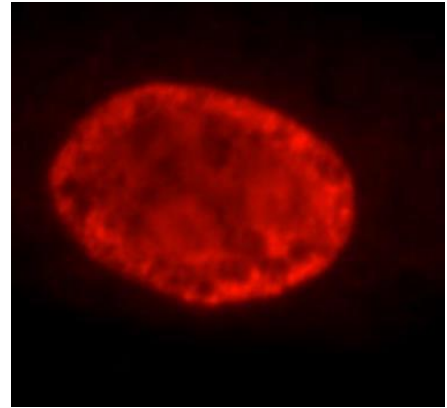
<b>Product name:</b>	PROX1
<b>Cat number:</b>	AB-84319
<b>Size:</b>	100ug
<b>Clone:</b>	POLY
<b>Concentration:</b>	1mg/ml
<b>Host:</b>	Rb
<b>Isotype:</b>	IgG
<b>Immunogen:</b>	prosperohomeobox 1
<b>Reactivity:</b>	Hu, Ms, Rt
<b>Applications:</b>	Western Blot: 1:500-1:2000 Immunohistochemistry: 1:20-1:200 Immunofluorescence: 1:20-1:200
<b>Molecular Weight:</b>	90kDa
<b>Purification:</b>	Aff. Pur.
<b>Form:</b>	Liquid
<b>Buffer:</b>	PBS with 0.02% sodium azide and 50% glycerol pH 7.3
<b>Storage:</b>	T -20°C for 12 months (Avoid repeated freeze / thaw cycles.)
<b>Background:</b>	Transcription factor involved in developmental processes such as cell fate determination, gene transcriptional regulation and progenitor cell regulation in a number of organs.Plays a critical role in embryonic development and functions as a key regulatory protein in neurogenesis and the development of the heart, eye lens, liver, pancreas and the lymphatic system.Involved in the regulation of the circadian rhythm. Represses: transcription of the retinoid-related orphan receptor RORG, transcriptional activator activity of RORA and RORG and the expression of RORA/G-target genes including core clock components: ARNTL/BMAL1, NPAS2 and CRY1 and metabolic genes: AVPR1A and ELOVL3.



human liver tissue were subjected to SDS PAGE followed by western blot with (PROX1 antibody) at dilution of 1:500



Immunohistochemistry of paraffin-embedded human lymphoma using (PROX1 antibody) at dilution of 1:50



Immunofluorescent analysis of HepG2 cells using (PROX1 Antibody) at dilution of 1:100.