

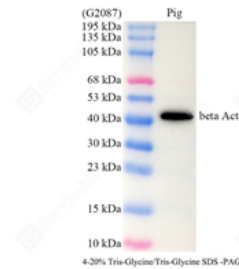
<b>Product name:</b>	Recombinant Anti-beta Actin Rabbit Monoclonal Antibody
<b>Cat number:</b>	MABS15003
<b>Conjugate:</b>	unconjugated
<b>Size:</b>	100 µL
<b>Concentration:</b>	1mg/ml
<b>Host:</b>	Rabbit
<b>Isotype:</b>	IgG
<b>Immunogen:</b>	KLH conjugated synthetic peptide corresponding to Mouse beta-Actin
<b>Reactivity:</b>	Species, Human, Mouse, Rat, Pg, Ch, Bv, Sh, Gt, Mk, Rb, Ta, Frog, Human, Mouse, Rat
<b>Applications:</b>	Applications Dilution WB 1: 3000-1: 5000 IHC/IF 1: 500-1: 1000 ICC/IF 1: 300-1: 1000
<b>Molecular Weight:</b>	42 kDa / 42 kDa
<b>Purification:</b>	Affinity purification
<b>Form:</b>	Liquid
<b>Buffer:</b>	PBS with 0.02%sodium azide,100 µg/ml BSA and 50% glycerol.
<b>Storage:</b>	Store at -20 °C for one year. Avoid repeated freeze/thaw cycles.
<b>Background:</b>	Actins are highly conserved proteins that are involved in various types of cell motility and are ubiquitously expressed in all eukaryotic cells.In vertebrates 3 main groups of actin isoforms, alpha, beta and gamma have been identified. The alpha actins are found in muscle tissues and are a major constituent of the contractile apparatus. The beta and gamma actins coexist in most cell types as components of the cytoskeleton and as mediators of internal cell motility.



WB analysis of beta Actin . Sample: Protein treated by RIPA Lysis Buffer . Blocking buffer: 3% Nonfat dry milk in TBST, RT, 1h. Primary antibody: 1: 5000, 4°C overnight. Secondary antibody: HRP Goat Anti-Rabbit IgG , 1: 5000, RT, 1h.



WB analysis of beta Actin . Sample: Protein treated by RIPA Lysis Buffer . Blocking buffer: 3% Nonfat dry milk in TBST, RT, 1h. Primary antibody: 1: 5000, 4°C overnight. Secondary antibody: HRP Goat Anti-Rabbit IgG , 1: 5000, RT, 1h.



WB analysis of beta Actin . Sample: Protein treated by RIPA Lysis Buffer . Blocking buffer: 3% Nonfat dry milk in TBST, RT, 1h. Primary antibody: 1: 5000, 4°C overnight. Secondary antibody: HRP Goat Anti-Rabbit IgG , 1: 5000, RT, 1h.