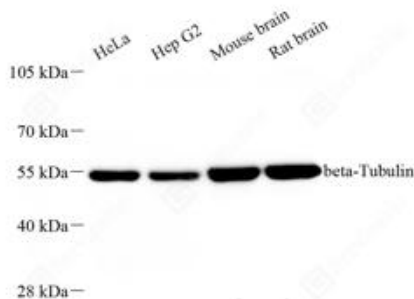


Product name:	Recombinant Anti-beta Tubulin antibody (HRP Conjugated)
Cat number:	MABS15140-HRP
Conjugate:	unconjugated
Size:	100 µL
Concentration:	1mg/ml
Host:	Rabbit
Immunogen:	Recombinant protein corresponding to Human beta Tubulin
Reactivity:	Species, Human, Mouse, Rat
Applications:	Applications Dilution WB 1: 1000-1: 2000
Purification:	Affinity purification
Form:	Liquid
Buffer:	PBS with 0.15% ProClin300, 100 µg/mL BSA and 50% glycerol.
Storage:	Store at -20°C for one year. Avoid repeated freeze/thaw cycles.
Background:	Tubulin is the major constituent of microtubules. It binds two moles of GTP, one at an exchangeable site on the beta chain and one at a non-exchangeable site on the alpha chain.



WB analysis of beta Tubulin. Sample: Protein treated by RIPA Lysis Buffer .Blocking buffer: 3% Nonfat dry milk in TBST, RT, 1h. Antibody: HRP conjugated anti-beta Tubulin antibody 1: 2000, 4°C overnight.