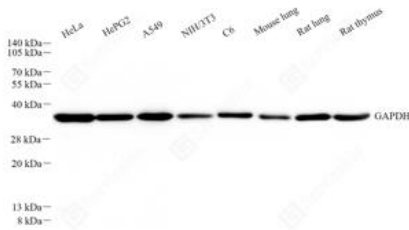
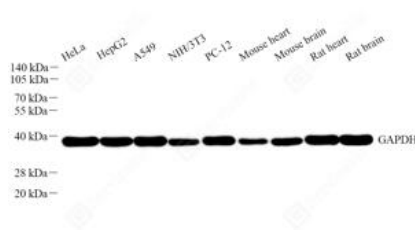


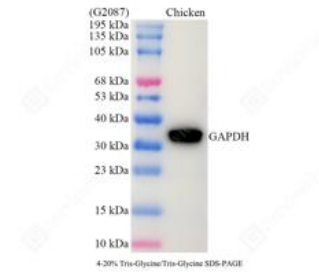
Product name:	Recombinant Anti-GAPDH antibody Rabbit Monoclonal Antibody
Cat number:	ABS15004
Conjugate:	unconjugated
Size:	100 µL
Concentration:	1mg/ml
Host:	Rabbit
Isotype:	IgG, κ
Immunogen:	KLH conjugated Synthetic peptide corresponding to Mouse GAPDH
Reactivity:	Species, Human, Mouse, Rat, Pg, Ch, Bv, Sh, Gt, Mk, Rb, Ta, Frog, Human, Mouse, Rat
Applications:	Applications Dilution WB 1: 3000-1: 5000 IHC/IF 1: 500-1: 2000 ICC/IF 1: 500-1: 1000
Purification:	Affinity purification
Form:	Liquid
Buffer:	PBS with 0.15% ProClin300, 100 µg/mL BSA and 50% glycerol.
Storage:	Store at -20°C for one year. Avoid repeated freeze/thaw cycles.
Background:	Glyceraldehyde 3-phosphate dehydrogenase (abbreviated as GAPDH or less commonly as G3PDH) is an enzyme of ~37kDa that catalyzes the sixth step of glycolysis and thus serves to break down glucose for energy and carbon molecules. In addition to this long established metabolic function, GAPDH has recently been implicated in several non-metabolic processes, including transcription activation, initiation of apoptosis, ER to Golgi vesicle shuttling, and fast axonal, or axoplasmic transport. In sperm, a testis-specific isoenzyme GAPDHS is expressed.



WB analysis of GAPDH. Sample: Protein treated by RIPA Lysis Buffer .Blocking buffer: 3% Nonfat dry milk in TBST, RT, 1h. Primary antibody: 1: 5000, 4°C overnight. Secondary antibody: HRP conjugated Goat Anti-Rabbit IgG , 1: 5000, RT, 1h.



WB analysis of GAPDH. Sample: Protein treated by RIPA Lysis Buffer .Blocking buffer: 3% Nonfat dry milk in TBST, RT, 1h. Primary antibody: 1: 5000, 4°C overnight. Secondary antibody: HRP conjugated Goat Anti-Rabbit IgG , 1: 5000, RT, 1h.



WB analysis of GAPDH. Sample: Protein treated by RIPA Lysis Buffer .Blocking buffer: 3% Nonfat dry milk in TBST, RT, 1h. Primary antibody: 1: 5000, 4°C overnight. Secondary antibody: HRP conjugated Goat Anti-Rabbit IgG , 1: 5000, RT, 1h.