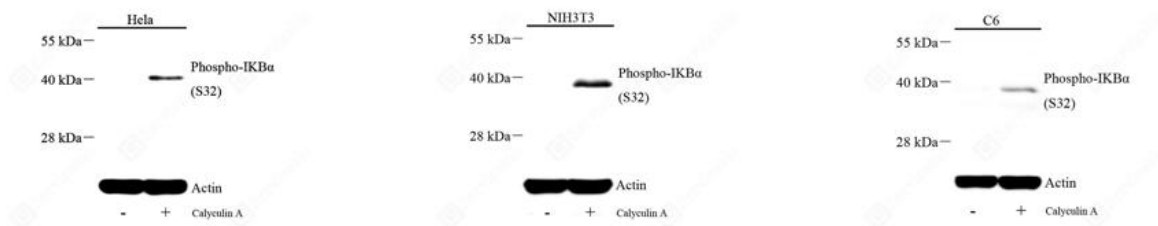


Product name:	Recombinant Anti-Phospho-IKB alpha(S32) Rabbit Monoclonal antibody
Cat number:	MABS15212
Conjugate:	unconjugated
Size:	100 µL
Clone:	IFK16
Concentration:	1mg/ml
Host:	Rabbit
Isotype:	IgG, κ
Immunogen:	KLH conjugated Synthetic phosphopeptide corresponding to Human IκB alpha [S32]
Reactivity:	Species, Human, Mouse, Rat
Applications:	Western Blot: 1: 500-1: 1000
Purification:	Affinity purification
Form:	Liquid
Buffer:	PBS with 0.15% ProClin300, 100 µg/mL BSA and 50% glycerol.
Storage:	Store at -20°C for one year. Avoid repeated freeze/thaw cycles.
Background:	Inhibits the activity of dimeric NF-kappa-B/REL complexes by trapping REL dimers in the cytoplasm through masking of their nuclear localization signals. On cellular stimulation by immune and proinflammatory responses, becomes phosphorylated promoting ubiquitination and degradation, enabling the dimeric RELA to translocate to the nucleus and activate transcription.



WB analysis of Phospho-IKB alpha. Sample: Protein treated by RIPA Lysis Buffer. Blocking buffer: 3% Nonfat dry milk in TBST, RT, 1h. Primary antibody: 1: 500, 4°C overnight. Secondary antibody: HRP conjugated Goat Anti-Rabbit IgG, 1: 5000, RT, 1h.

WB analysis of Phospho-IKB alpha. Sample: Protein treated by RIPA Lysis Buffer. Blocking buffer: 3% Nonfat dry milk in TBST, RT, 1h. Primary antibody: 1: 500, 4°C overnight. Secondary antibody: HRP conjugated Goat Anti-Rabbit IgG, 1: 5000, RT, 1h.

WB analysis of Phospho-IKB alpha. Sample: Protein treated by RIPA Lysis Buffer. Blocking buffer: 3% Nonfat dry milk in TBST, RT, 1h. Primary antibody: 1: 500, 4°C overnight. Secondary antibody: HRP conjugated Goat Anti-Rabbit IgG, 1: 5000, RT, 1h.