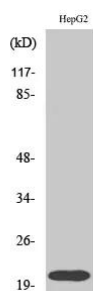
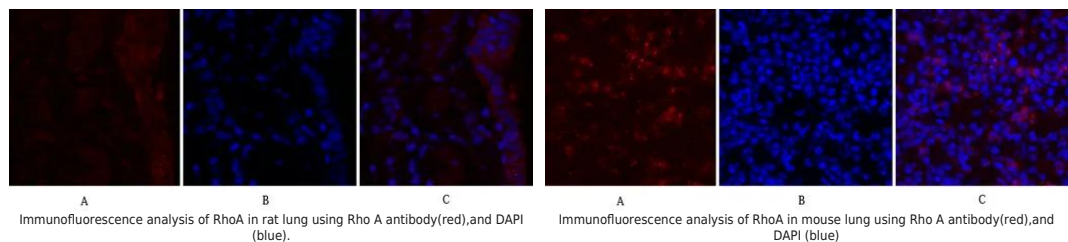


<b>Product name:</b>	RhoA Rabbit Polyclonal Antibody
<b>Cat number:</b>	ABN03398
<b>Conjugate:</b>	Unconjugated
<b>Size:</b>	100µL
<b>Clone:</b>	POLY
<b>Concentration:</b>	1mg/ml
<b>Host:</b>	Rabbit
<b>Isotype:</b>	IgG
<b>Immunogen:</b>	The antiserum was produced against synthesized peptide derived from human RhoA. AA range:144-193
<b>Reactivity:</b>	Human,Mouse,Rat
<b>Applications:</b>	WB 1:500-1:1000,IHC 1:50-1:100,ICC/IF 1:50-1:200,ELISA 1:5000-1:20000
<b>Molecular Weight:</b>	22 kDa
<b>Purification:</b>	Affinity purification
<b>Form:</b>	liquid
<b>Buffer:</b>	Liquid in PBS containing 50% glycerol, 0.5% protective protein and 0.02% sodium azide, pH 7.3.
<b>Storage:</b>	Store at 4°C short term. Aliquot and store at -20°C long term. Avoid freeze/thaw cycles.
<b>Background:</b>	Rho A is a small G protein of the Rho family. Regulates a signal transduction pathway linking plasma membrane receptors to the assembly of focal adhesions and actin stress fibers.



Western blot analysis of RhoA in HepG2 lysates using RhoA antibody.



Immunofluorescence analysis of RhoA in rat lung using Rho A antibody(red),and DAPI (blue).

Immunofluorescence analysis of RhoA in mouse lung using Rho A antibody(red),and DAPI (blue)