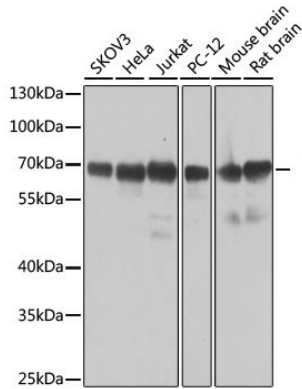
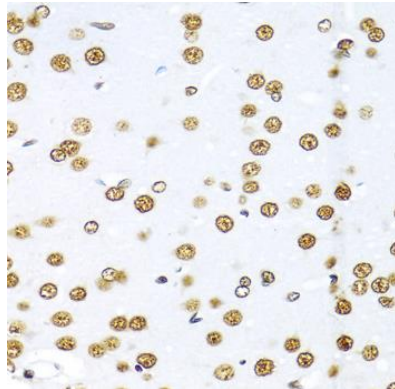
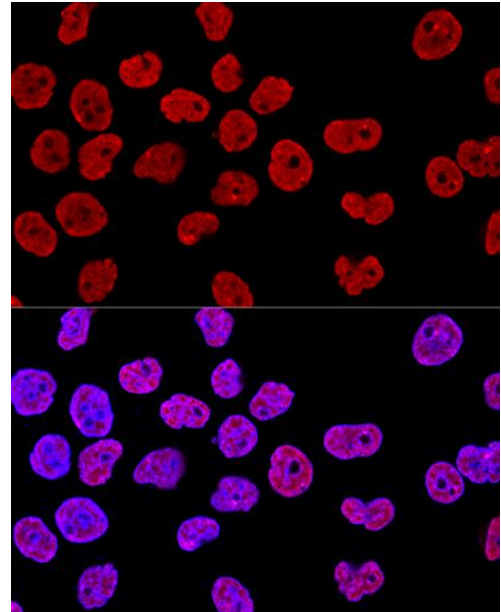

| | |
|--------------------------|--|
| Product name: | SAM68 |
| Cat number: | AB-84326 |
| Size: | 100 ug |
| Clone: | POLY |
| Concentration: | 1mg/ml |
| Host: | Rb |
| Isotype: | IgG |
| Immunogen: | A synthetic peptide corresponding to a sequence within amino acids 300 to the Cterminus of human SAM68. |
| Reactivity: | Hu, Ms, Rt |
| Applications: | Western Blot: 1:500 - 1:2000 Immunohistochemistry: 1:100 - 1:200 Immunofluorescence: 1:50 - 1:200 |
| Molecular Weight: | 68kDa |
| Purification: | Aff. Pur. |
| Form: | Liquid |
| Buffer: | PBS with 0.02% sodium azide,50% glycerol,pH7.3. |
| Storage: | Store at -20°C. Avoid freeze / thaw cycles. |
| Background: | This gene encodes a member of the K homology domain-containing, RNA-binding, signal transduction-associated protein family. The encoded protein appears to have many functions and may be involved in a variety of cellular processes, including alternative splicing, cell cycle regulation, RNA 3'-end formation, tumorigenesis, and regulation of human immunodeficiency virus gene expression. Alternative splicing results in multiple transcript variants. |



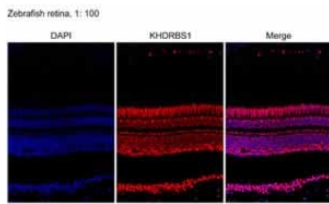
Western blot analysis of extracts of various cell lines, using SAM68 antibody (at 1:1000 dilution). Secondary antibody: HRP Goat Anti-Rabbit IgG (H+L) at 1:10000 dilution. Lysates/proteins: 25ug per lane. Blocking buffer: 3% nonfat dry milk in TBST. Detection: ECL west Pico Plus. Exposure time: 10s.



Immunohistochemistry of paraffin embedded rat brain using SAM68 antibody at dilution of 1:100 (40x lens).

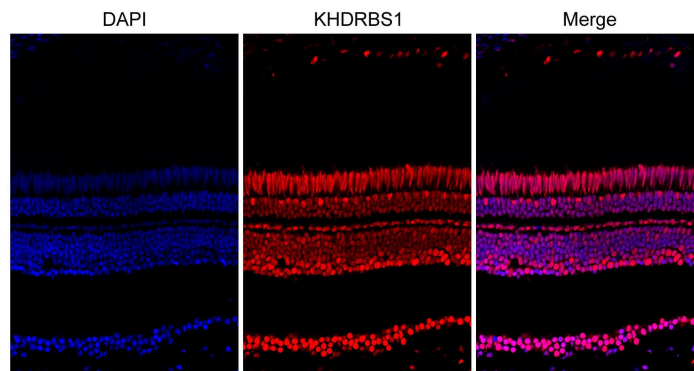


Confocal immunofluorescence analysis of HeLa cells using SAM68 Polyclonal Antibody at dilution of 1:400. Blue: DAPI for nuclear staining.



Review for SAM68 Rabbit pAb Experiment Type: Immunofluorescence(IF) Sample: Zebrafish retina
Description: Immunofluorescence analysis of Zebrafish retina, using SAM68 Polyclonal Antibody.

Zebrafish retina, 1: 100



Review for SAM68 Rabbit pAb Experiment Type: Immunofluorescence(IF) Sample: Zebrafish retina
Description: Immunofluorescence analysis of Zebrafish retina, using PCBP2 Polyclonal Antibody.