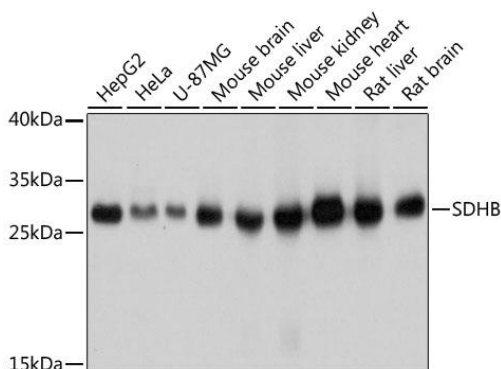
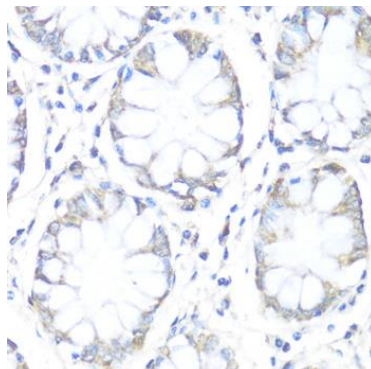


Product name:	SDHB
Cat number:	MAB-94613
Size:	100 ug
Clone:	21A11AE7
Concentration:	1mg/ml
Host:	Rb
Isotype:	IgG
Immunogen:	Recombinant fusion protein containing a sequence corresponding to amino acids 29-280 of human SDHB.
Reactivity:	Hu, Ms, Rt
Applications:	Western Blot: 1:500 - 1:2000 Immunohistochemistry: 1:50-1:100 Immunofluorescence: 1:50-1:200
Molecular Weight:	32kDa
Purification:	Aff. Pur
Form:	Liquid
Buffer:	PBS with 0.02% sodium azide,50% glycerol,pH7.3.
Storage:	Store at -20°C. Avoid freeze / thaw cycles.

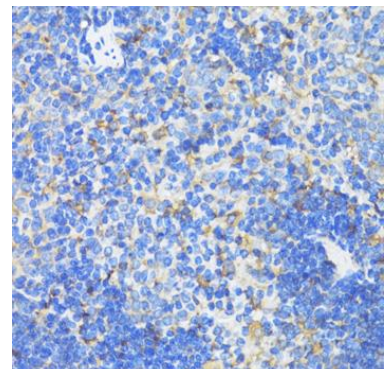
Background: Complex II of the respiratory chain, which is specifically involved in the oxidation of succinate, carries electrons from FADH to CoQ. The complex is composed of four nuclear-encoded subunits and is localized in the mitochondrial inner membrane. The iron-sulfur subunit is highly conserved and contains three cysteine-rich clusters which may comprise the iron-sulfur centers of the enzyme. Sporadic and familial mutations in this gene result in paragangliomas and pheochromocytoma, and support a link between mitochondrial dysfunction and tumorigenesis.



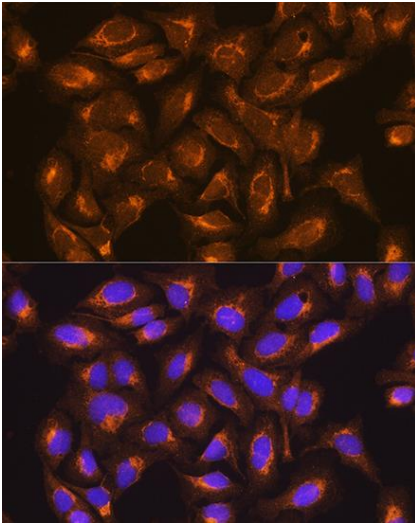
Western blot analysis of extracts of various cell lines, using SDHB antibody at 1:1000 dilution. Secondary antibody: HRP Goat Anti-Rabbit IgG (H+L) at 1:10000 dilution. Lysates/proteins: 25ug per lane. Blocking buffer: 3% nonfat dry milk in TBST. Detection: ECL West Pico Plus. Exposure time: 1s.



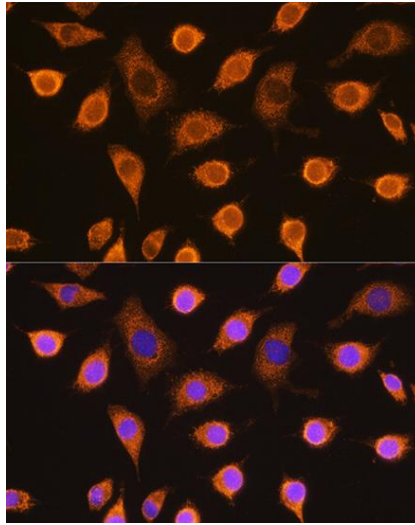
Immunohistochemistry of paraffin embedded human colon using SDHB antibody at dilution of 1:100 (40x lens).



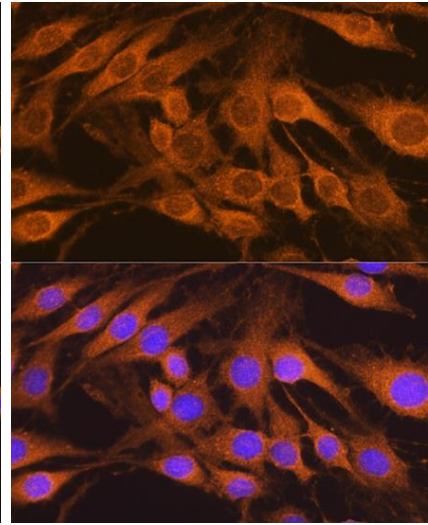
Immunohistochemistry of paraffin embedded mouse spleen using SDHB antibody at dilution of 1:100 (40x lens).



Immunofluorescence analysis of U2OS cells using SDHB Rabbit mAb at dilution of 1:100. Blue: DAPI for nuclear staining.



Immunofluorescence analysis of L929 cells using SDHB Rabbit mAb at dilution of 1:100. Blue: DAPI for nuclear staining.



Immunofluorescence analysis of C6 cells using SDHB Rabbit mAb at dilution of 1:100. Blue: DAPI for nuclear staining.