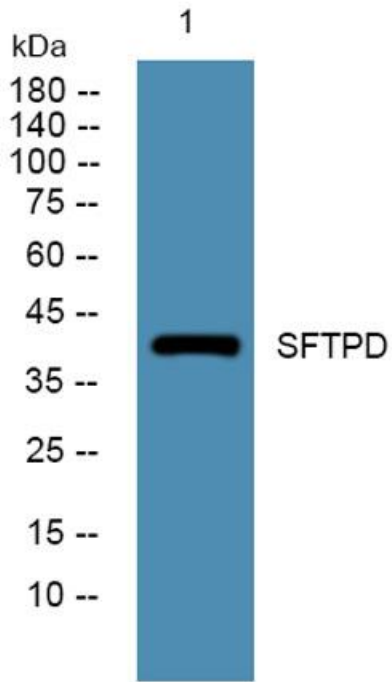


Product name:	SFTPD Rabbit Polyclonal Antibody
Cat number:	AB-E13897
Conjugate:	Unconjugated
Size:	100ug
Clone:	POLY
Concentration:	1mg/ml
Host:	Rabbit
Isotype:	IgG
Immunogen:	Synthesized peptide derived from human protein . at AA range: 290-370
Reactivity:	Human,Mouse,Rat
Applications:	Western Blot: 1:500-1:2000
Molecular Weight:	41kD
Purification:	The antibody was affinity-purified from rabbit antiserum by affinity-chromatography using epitope-specific immunogen.
Form:	Liquid
Buffer:	Liquid in PBS containing 50% glycerol, 0.5% BSA and 0.02% sodium azide.
Storage:	Store at -20°C. Avoid repeated freeze-thaw cycles.
Background:	The protein encoded by this gene is part of the innate immune response, protecting the lungs against inhaled microorganisms and chemicals. The encoded protein may also be involved in surfactant metabolism.



Western blot analysis of lysates from Jarkat cells, primary antibody was diluted at 1:1000, 4° over night