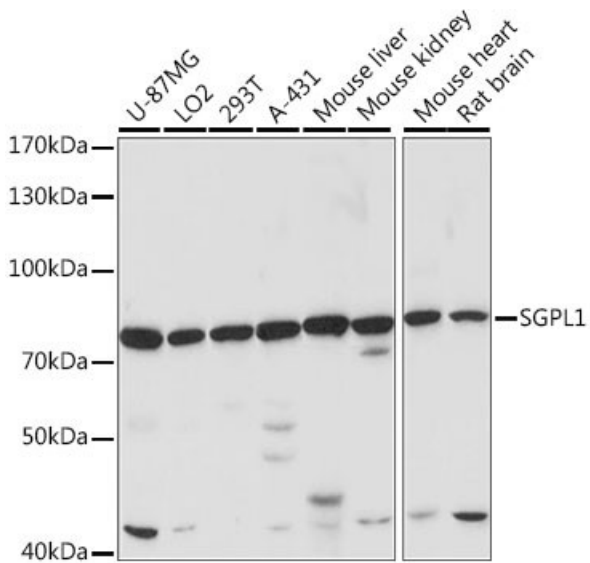

Product name:	SGPL1
Cat number:	AB-83611
Size:	100 ug
Clone:	POLY
Concentration:	1mg/ml
Host:	Rb
Isotype:	IgG
Immunogen:	The immunogen is a synthetic peptide directed towards the C-terminal region of Human SGPL1
Reactivity:	Hu, Ms, Rt
Applications:	Western Blot: 1:500 – 1:2000 Application details contain suggested dilutions. End user should optimize the final working concentrations.
Molecular Weight:	63524
Purification:	Aff. Pur.
Form:	Liquid
Buffer:	Purified antibody supplied in 1x PBS buffer with 0.02% sodium azide, 50% glycerol, pH 7.3.
Storage:	At -20°C for one year. It can also be aliquoted and stored frozen at -20°C for a longer time. Avoid repeated freezing and thawing.
Background:	SGPL1 (Sphingosine-1-Phosphate Lyase 1) is a Protein Coding gene. Diseases associated with SGPL1 include Congenital Adrenal Insufficiency. Among its related pathways are Sphingolipid metabolism (which is part of Lipid metabolism) and Sphingolipid signaling pathway. Cleaves phosphorylated sphingoid bases (PSBs), such as sphingosine-1-phosphate, into fatty aldehydes and phosphoethanolamine. Elevates stress-induced ceramide production and apoptosis.



Western blot analysis of extracts of various cell lines using
Secondary Antibody: Goat anti- Rabbit Anti- IgG (H+L) at
1:10,000 Affinity purified polyclonal SGLP1 antibody at
1:1,000 Lysate/protein: 25ug/lane Blocking buffer: 3% not fat
dry milk in TBST. The blot was developed using
chemiluminescence method (ECL West Pico) Exposure: 120''