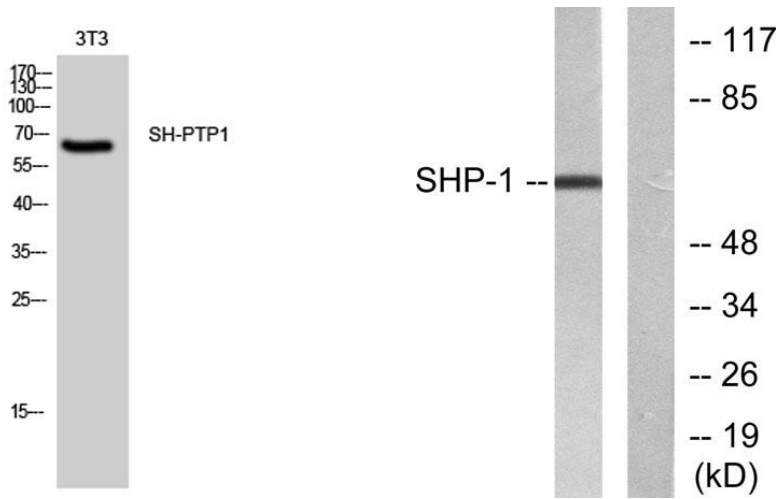
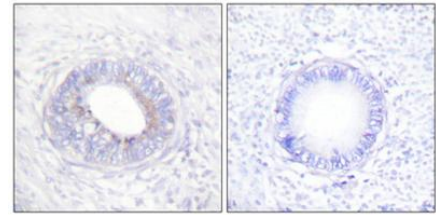

Product name:	SHP-1 Rabbit Polyclonal Antibody
Cat number:	AB-84762
Conjugate:	Unconjugated
Size:	100 ug
Clone:	POLY
Concentration:	1mg/ml
Host:	Rabbit
Isotype:	IgG
Immunogen:	The antiserum was produced against synthesized peptide derived from human SHP-1. AA range:502-551
Reactivity:	Human, Mouse, Rat
Applications:	Western Blot: 1/500 - 1/2000 Immunohistochemistry: 1/100 - 1/300 Immunofluorescence: 1:50-200 ELISA: 1/20000
Molecular Weight:	67kD
Purification:	The antibody was affinity-purified from rabbit antiserum by affinity-chromatograp
Form:	Liquid
Buffer:	Liquid in PBS containing 50% glycerol, 0.5% BSA and 0.02% sodium azide.
Storage:	Store at -20°C. Avoid repeated freeze-thaw cycles.
Background:	<p>The protein encoded by this gene is a member of the protein tyrosine phosphatase (PTP) family. PTPs are known to be signaling molecules that regulate a variety of cellular processes including cell growth, differentiation, mitotic cycle, and oncogenic transformation. N-terminal part of this PTP contains two tandem Src homolog (SH2) domains, which act as protein phospho-tyrosine binding domains, and mediate the interaction of this PTP with its substrates. This PTP is expressed primarily in hematopoietic cells, and functions as an important regulator of multiple signaling pathways in hematopoietic cells. This PTP has been shown to interact with, and dephosphorylate a wide spectrum of phospho-proteins involved in hematopoietic cell signaling. Multiple alternatively spliced variants of this gene, which encode distinct isoforms, have been reported.</p>

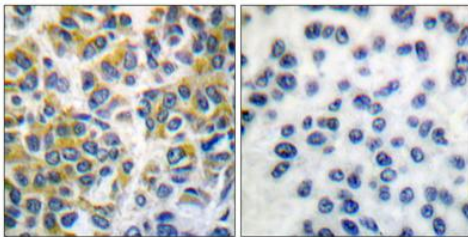


Western Blot analysis of 3T3 cells using SH-PTP1 Polyclonal Antibody

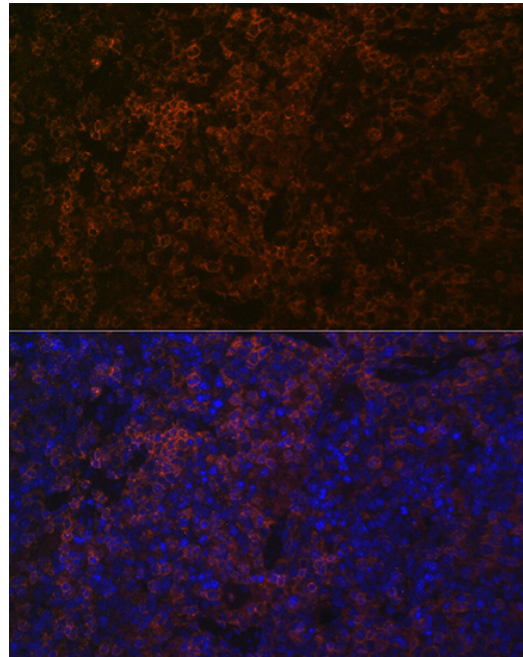
Western blot analysis of lysates from NIH/3T3 cells, using SHP-1 Antibody. The lane on the right is blocked with the synthesized peptide.



Immunohistochemical analysis of paraffin-embedded Human colon cancer. Antibody was diluted at 1:100(4° overnight). High-pressure and temperature Tris-EDTA, pH8.0 was used for antigen retrieval. Negative control (right) obtained from antibody was pre-absorbed by immunogen peptide.



Immunohistochemistry analysis of paraffin-embedded human breast carcinoma tissue, using SHP-1 Antibody. The picture on the right is blocked with the synthesized peptide.



Immunofluorescence analysis of mouse spleen using SHP1 at dilution of 1:100 (40x lens). Blue: DAPI for nuclear staining.