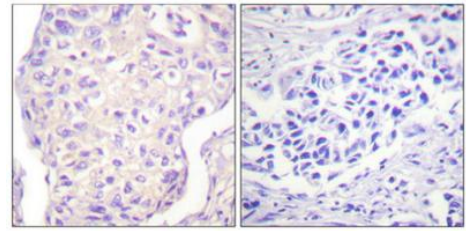
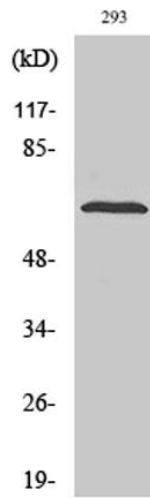
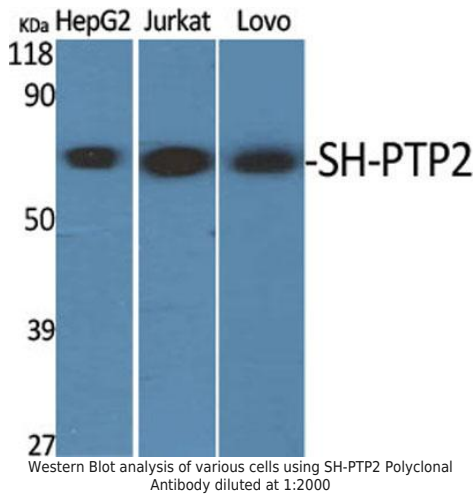
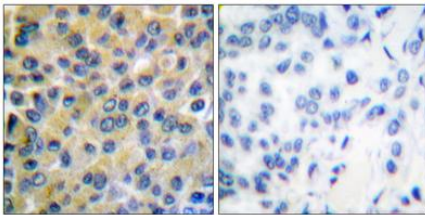
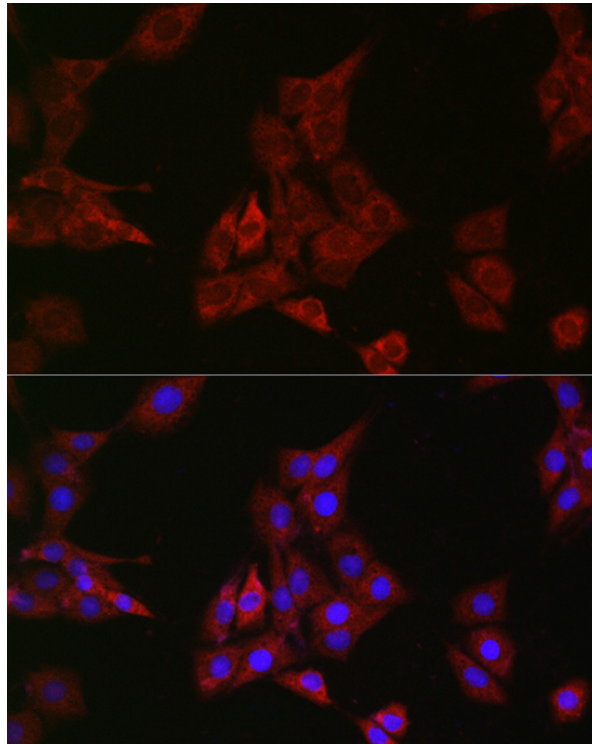

Product name:	SHP-2 Rabbit Polyclonal Antibody
Cat number:	AB-84763
Conjugate:	Unconjugated
Size:	100 ug
Clone:	POLY
Concentration:	1mg/ml
Host:	Rabbit
Isotype:	IgG
Immunogen:	The antiserum was produced against synthesized peptide derived from human SHP-2. AA range:546-595
Reactivity:	Human, Mouse, Rat
Applications:	Western Blot: 1/500 - 1/2000 Immunohistochemistry: 1/100 - 1/300 Immunofluorescence: 1:50-200 ELISA: 1/20000
Molecular Weight:	72kD
Purification:	The antibody was affinity-purified from rabbit antiserum by affinity-chromatograp
Form:	Liquid
Buffer:	Liquid in PBS containing 50% glycerol, 0.5% BSA and 0.02% sodium azide.
Storage:	Store at -20°C. Avoid repeated freeze-thaw cycles.
Background:	The protein encoded by this gene is a member of the protein tyrosine phosphatase (PTP) family. PTPs. are known to be signaling molecules that regulate a variety of cellular processes including cell growth, differentiation, mitotic cycle, and oncogenic transformation. This PTP contains two tandem Src homology-2 domains, which function as phospho-tyrosine binding domains and mediate the interaction of this PTP with its substrates. This PTP is widely expressed in most tissues and plays a regulatory role in various cell signaling events that are important for a diversity of cell functions, such as mitogenic activation, metabolic control, transcription regulation, and cell migration. Mutations in this gene are a cause of Noonan syndrome as well as acute myeloid leukemia.



Immunohistochemical analysis of paraffin-embedded Human breast cancer. Antibody was diluted at 1:100(4° overnight). High-pressure and temperature Tris-EDTA,pH8.0 was used for antigen retrieval. Negative control (right) obtained from antibody was pre-absor



Immunohistochemistry analysis of paraffin-embedded human breast carcinoma tissue, using SHP-2 Antibody. The picture on the right is blocked with the synthesized peptide.



Immunofluorescence analysis of PC-12 cells using SHP2 at dilution of 1:100 (40x lens). Blue: DAPI for nuclear staining.