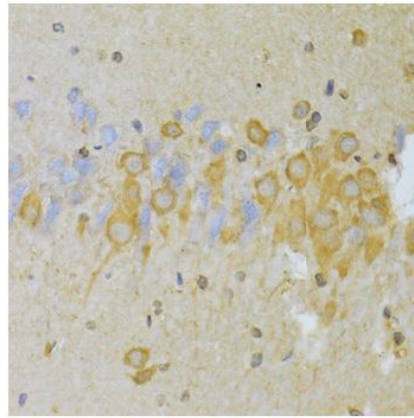
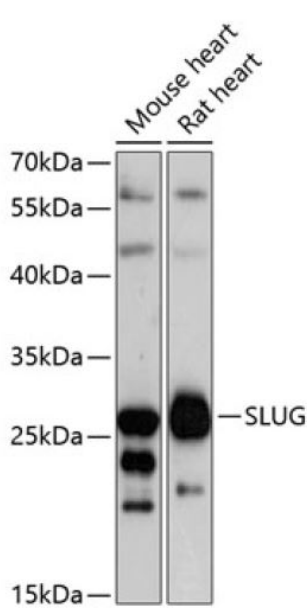


---

<b>Product name:</b>	SLUG
<b>Cat number:</b>	AB-84208
<b>Size:</b>	100 ug
<b>Clone:</b>	POLY
<b>Concentration:</b>	1mg/ml
<b>Host:</b>	Rb
<b>Isotype:</b>	IgG
<b>Immunogen:</b>	Recombinant fusion protein containing a sequence corresponding to amino acids 89-268 of human SLUG
<b>Reactivity:</b>	Hu, Ms, Rt
<b>Applications:</b>	Western Blot : 1:500-1:2,000 Immunofluorescence/Immunocytochemistry: 1:50-1: 200 Immunohistochemistry (paraffin, formalin, frozen Tissues): 1:50-1:200
<b>Molecular Weight:</b>	29kDa
<b>Purification:</b>	Aff. Pur.
<b>Form:</b>	Liquid
<b>Buffer:</b>	PBS with 0,02% sodium azide, 50% glycerol pH7.3
<b>Storage:</b>	Storage for short term at 4°C recommended, for longer term at -20°C, minimize freeze/thaw cycles
<b>Background:</b>	This gene encodes a member of the Snail family of C2H2-type zinc finger transcription factors. The encoded protein acts as a transcriptional repressor that binds to E-box motifs and is also likely to repress E-cadherin transcription in breast carcinoma. This protein is involved in epithelial-mesenchymal transitions and has antiapoptotic activity. Mutations in this gene may be associated with sporadic cases of neural tube defects.

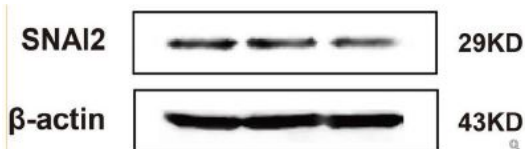


Immunohistochemistry of paraffin-embedded rat brain using SLUG Antibody at dilution of 1:100

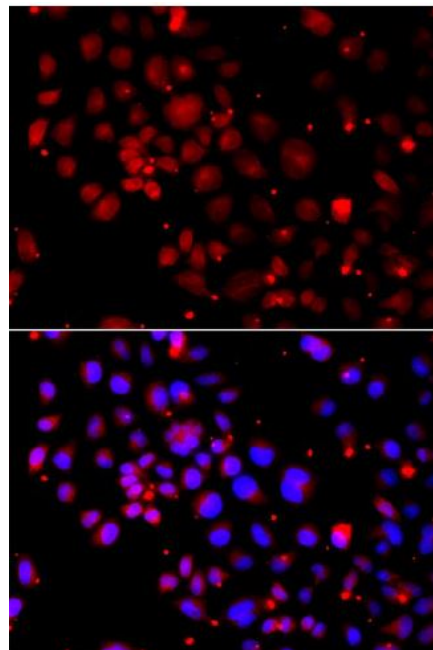


Application: Western blot (WB) Sample mouse cells Loading Amount 15 ug Dilution 1:1000 Incubation time over night Temperature : 4 °C Exposure: 30s Observed Band: 25 kDa

Western blot analysis of extracts of various cell lines, using SLUG antibody at 1:1000 dilution. Secondary antibody: HRP Goat Anti-Rabbit IgG (H+L) at 1:10000 dilution. Lysates/proteins: 25ug per lane. Blocking buffer: 3% nonfat dry milk in TBST. Detection: ECL West Pico Kit Exposure time: 60s..



Application: Western blot Sample MDA-MB-231 Loading Amount 15 ug Dilution 1:2000 Incubation time over night Temperature 4 °C Exposure 30s Observed Band 29 kDa



Immunofluorescence analysis of A549 cells using SLUG antibody. Blue: DAPI for nuclear staining.