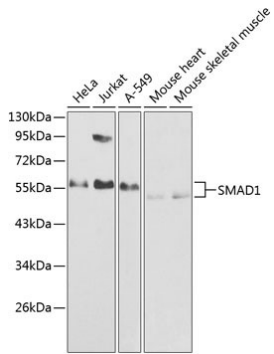
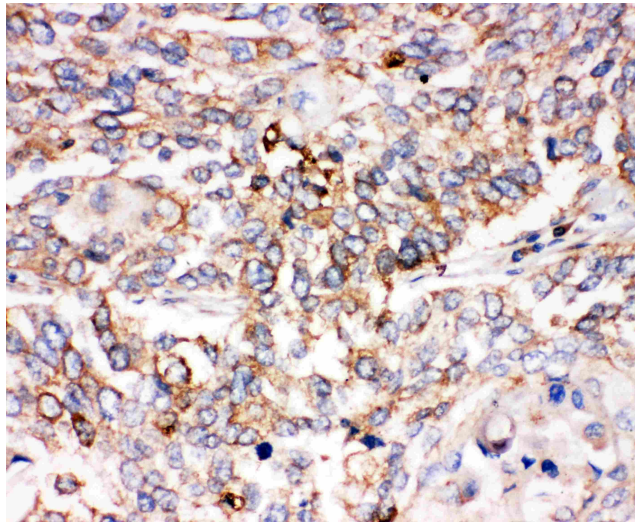
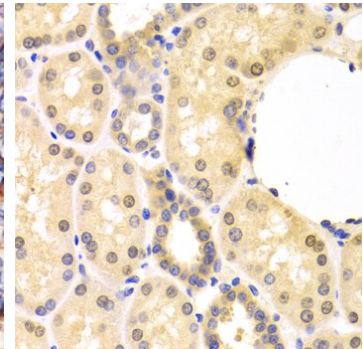

Product name:	SMAD1
Cat number:	AB-82128
Size:	100 ug
Clone:	POLY
Concentration:	1mg/ml
Host:	Rb
Isotype:	IgG
Immunogen:	A synthetic peptide corresponding to a sequence at the C-terminus of mouse Smad1(253-267aa AEISRGDVQAVAYEE), different from the related rat sequence by one amino acid, and different from the related human sequence by two amino acids.
Reactivity:	Hu, Ms, Rt
Applications:	Immunocytochemistry , 1:50 -1:200 Immunohistochemistry(Paraffin-embedded Section), 1:50-1:200, Human, Rat, Mouse, By Heat Western blot, 1:500-1:2000 Human, Mouse, Rat Application details contain suggested dilutions. End user should optimize the final working concentrations.
Molecular Weight:	52kDa
Purification:	Aff. Pur.
Form:	Liquid
Buffer:	PBS with 0,02% sodium azide, 50% glycerol pH7.3
Storage:	At -20°C for one year. It can also be aliquotted and stored frozen at -20°C for a longer time. Avoid repeated freezing and thawing.
Background:	Transcriptional modulator activated by BMP (bone morphogenetic proteins) type 1 receptor kinase. SMAD1 is a receptor-regulated SMAD (R-SMAD) (By similarity). May play a role in the initiation and maintenance of spermatogenesis. SMAD1/OAZ1/PSMB4 complex mediates the degradation of the CREBBP/EP300 repressor SNIP1 (By similarity). May act synergistically with SMAD4 and YY1 in bone morphogenetic protein (BMP)-mediated cardiac-specific gene expression (PubMed:15329343).



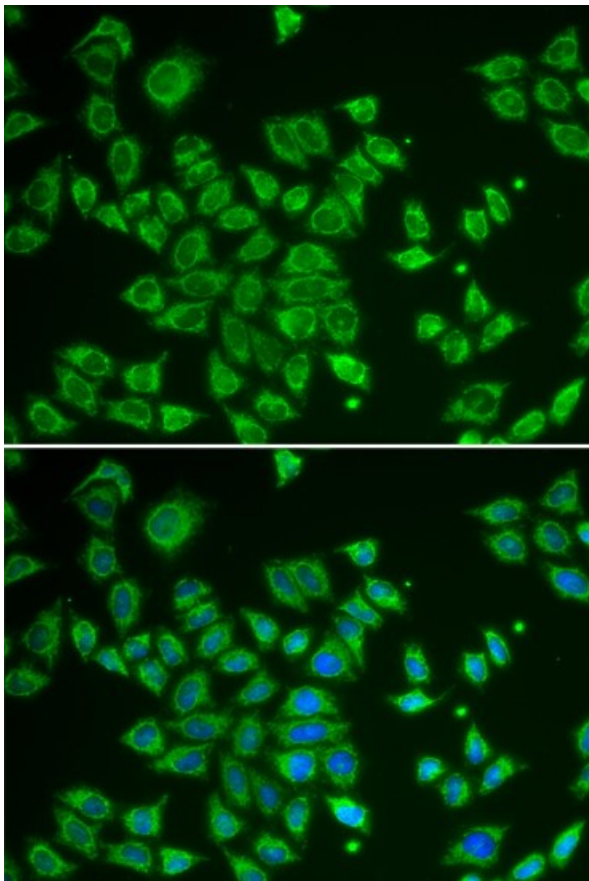
Western blot analysis of extracts of various cell lines, using SMAD1 antibody at 1:1000 dilution. Secondary antibody: HRP Goat Anti-Rabbit IgG (H+L) at 1:10000 dilution. Lysates/proteins: 25ug per lane. Blocking buffer: 3% nonfat dry milk in TBST



Anti-Smad1 antibody, IHC(P) IHC(P): Human Lung Cancer Tissue Anti-Smad1



Immunohistochemistry of paraffin-embedded human kidney using SMAD1 antibody at dilution of 1:100 (40x lens).



Immunofluorescence analysis of HeLa cells using SMAD1 antibody .Blue: DAPI for nuclear staining.