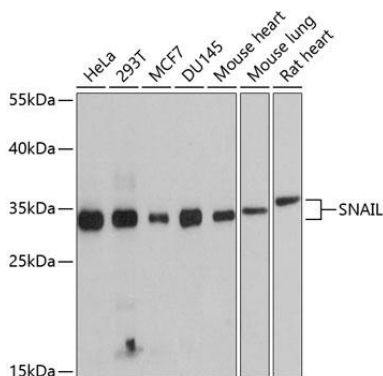
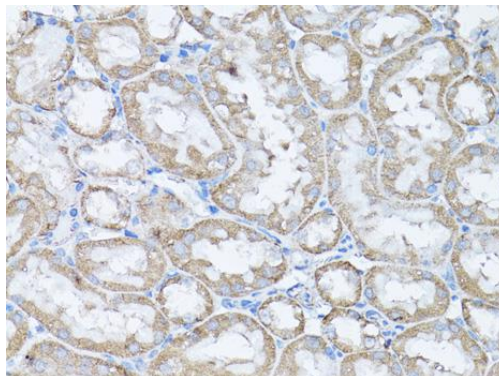


**Product name:** SNAIL  
**Cat number:** AB-84195  
**Size:** 100ug  
**Clone:** POLY  
**Concentration:** 1mg/ml  
**Host:** Rb  
**Isotype:** IgG  
**Immunogen:** Recombinant fusion protein containing a sequence corresponding to amino acids 1-264 of human SNAIL  
**Reactivity:** Hu, Ms, Rt  
**Applications:** Western Blot: 1:500 - 1:2000 Immunohistochemistry: 1:50 - 1:200  
**Molecular Weight:** 34kDa  
**Purification:** Aff. Pur.  
**Form:** Liquid  
**Buffer:** PBS with 0.02% sodium azide, 50% glycerol, pH7.3.  
**Storage:** Store at -20°C. Avoid freeze / thaw cycles.

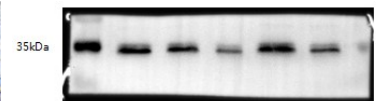
**Background:** The Drosophila embryonic protein snail is a zinc finger transcriptional repressor which downregulates the expression of ectodermal genes within the mesoderm. The nuclear protein encoded by this gene is structurally similar to the Drosophila snail protein, and is also thought to be critical for mesoderm formation in the developing embryo. At least two variants of a similar processed pseudogene have been found on chromosome 2.



Western blot analysis of extracts of various cell lines, using SNAIL antibody at 1:1000 dilution. Secondary antibody: HRP Goat Anti- Rabbit IgG (H+L) at 1:10000 dilution. Lysates/proteins: 25ug per lane. Blocking buffer: 3% nonfat dry milk in TBST. Detection: ECL West Pico Plus. Exposure time: 60s.



Immunohistochemistry of paraffin embedded rat kidney using SNAIL antibody at dilution of 1:100 (40x lens).



Review for SNAIL Polyclonal Antibody Application:  
 Western blot (WB) Sample: mouse cells Loading:  
 Amount 15 ug Dilution: 1:1000 Incubation: timeover night  
 Temperature: 4 °C Exposure: 30s Observed Band: 35 kDa  
 Remarks: Western blot analysis of extracts of mouse cells, using antibody at 1:1000 dilution.