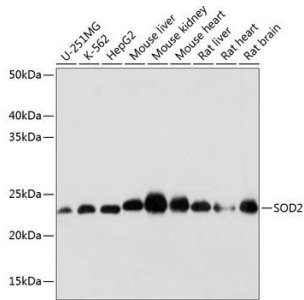
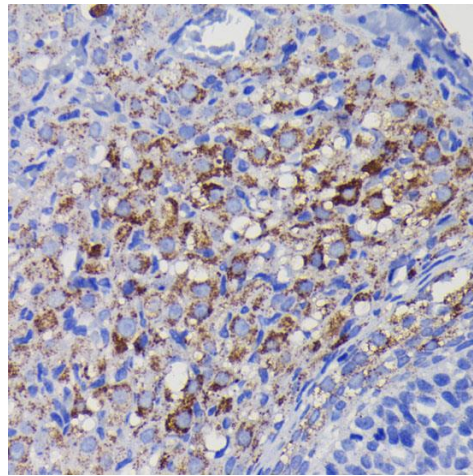
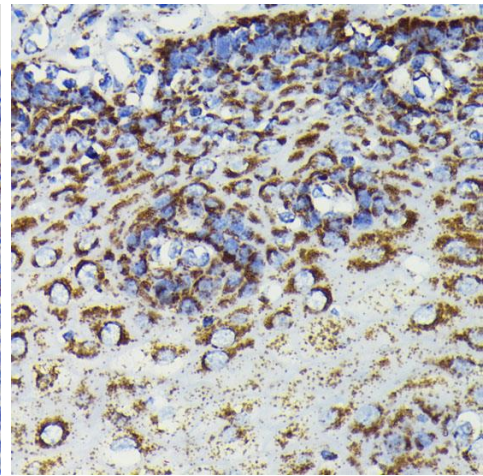

Product name:	SOD2
Cat number:	MAB-94601
Size:	100 ug
Clone:	S2-F
Concentration:	1mg/ml
Host:	Rb
Isotype:	IgG
Immunogen:	A synthesized peptide derived from human SOD2.
Reactivity:	Hu, Rt, Ms
Applications:	Western Blot: 1:500 - 1:2000 Immunohistochemistry: 1:50 - 1:200 Immunofluorescence: 1:50 - 1:200
Molecular Weight:	25kDa
Purification:	Aff. Pur.
Form:	Liquid
Buffer:	PBS with 0.02% sodium azide,0.05% BSA,50% glycerol,pH7.3.
Storage:	Store at -20°C. Avoid freeze / thaw cycles.
Background:	This gene is a member of the iron/manganese superoxide dismutase family. It encodes a mitochondrial protein that forms a homotetramer and binds one manganese ion per subunit. This protein binds to the superoxide byproducts of oxidative phosphorylation and converts them to hydrogen peroxide and diatomic oxygen. Mutations in this gene have been associated with idiopathic cardiomyopathy (IDC), premature aging, sporadic motor neuron disease, and cancer. Alternative splicing of this gene results in multiple transcript variants. A related pseudogene has been identified on chromosome 1.



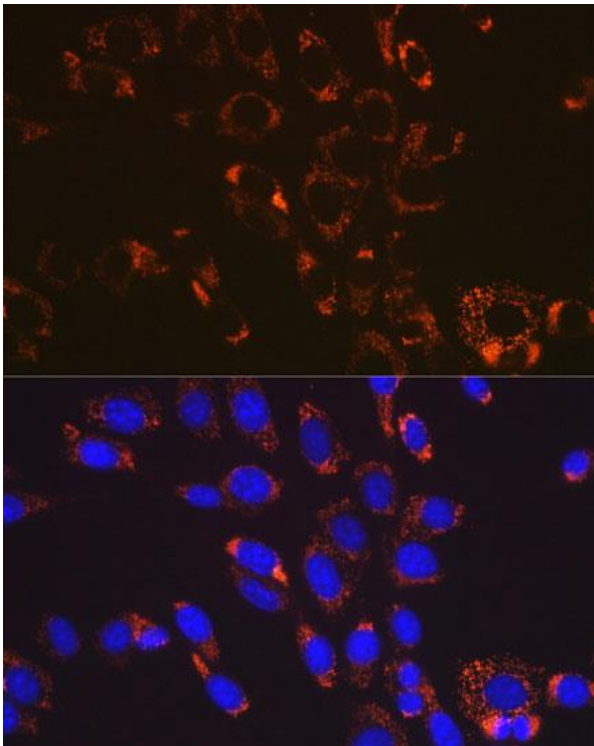
Western blot analysis of extracts of various cell lines, using SOD2 antibody at 1:1000 dilution. Secondary antibody: HRP Goat Anti-Rabbit IgG (H+L) at 1:10000 dilution. Lysates/proteins: 25ug per lane. Blocking buffer: 3% nonfat dry milk in TBST. Detection: ECL West Pico Plus. Exposure time: 1s.



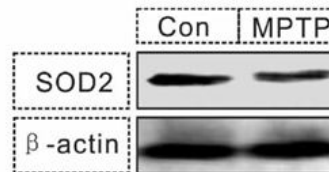
Immunohistochemistry of paraffin-embedded rat ovary using SOD2 antibody at dilution of 1:100 (40x lens).



Immunohistochemistry of paraffin-embedded human esophageal using SOD2 antibody at dilution of 1:100 (40x lens).



Immunofluorescence analysis of NIH-3T3 cells using SOD2 antibody. Blue: DAPI for nuclear staining.



Review for SOD2 Rabbit Monoclonal Antibody
Experiment Type: Western blot(WB) Sample
NPCs Description: Western blot analysis of
extracts of NPCs cells, using SOD2 Polyclonal
Antibody.